



SMART GRID SOLUTIONS

SIMA Grid, SIMA City, SIMA Home, SIMA Universe, SIMA Big Data

DRCs              ...

DRC-015G



DRC-002

DRC-011

DRC-015G

DRC-015G

DRC-015G

DRC-015G

DRC-015G

VP-DOC-S.CTL-DRC-015G.EN-V2.1

Creating a one-stop eco-sustainability system to transform the entire conventional grids into digital smart grid systems that streamline electrical grid management, optimize efficiency, reduce operational costs, and increase cost efficiency, making the grid more reliable and sustainable.



DRC-015

Smart Grid IoT Controller for Low Voltage Distribution Board

The DRC-015 is a state-of-the-art smart grid device designed to monitor, track, and modernize existing Low Voltage Distribution Board (LVDB) infrastructure.

This groundbreaking solution streamlines the operation of LVDB, provides real-time load monitoring, overload detection, and tracks the temperature condition of the transformer fast and accurately, empowering organizations to proactively manage their distribution system.

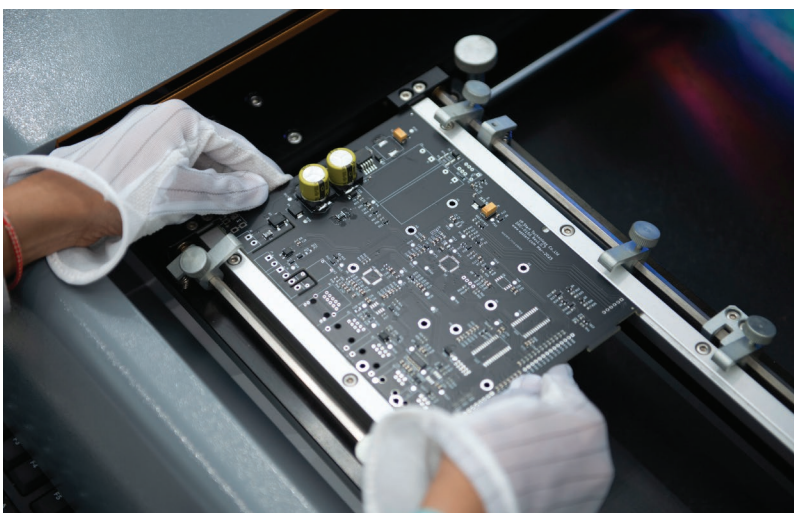
This capability is crucial for utilities to manage and prevent the potential fire hazards quickly and efficiently.



▲ DRC-015G Installation



LMS



▲ DRC-015 Remote Control for Distribution Board (LVDB)



DRC-015G



LV Feeder Monitoring

Key Features

Real-time Monitoring:

Through real-time data acquisition, operators can now seamlessly oversee the status of LVDB from a centralized control room using our sophisticated LMS (Low Voltage Distribution Management System). All critical status information such as power source, voltage, current, room temperature, feeder current flow, and feeder over limit current is clearly displayed on their PC screens, enabling fast and informed decision-making.

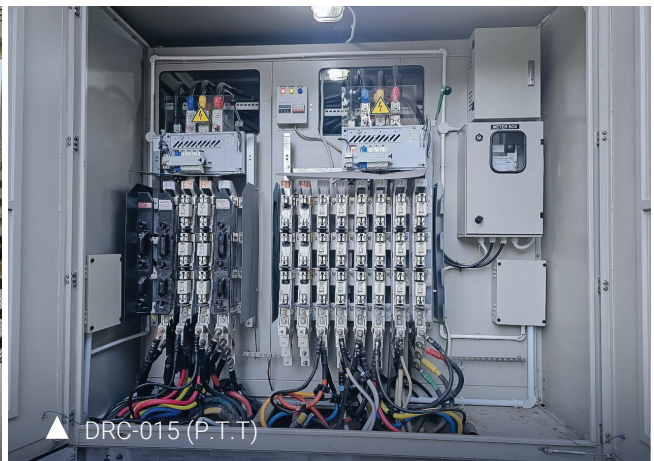
Analysis:

Operators can utilize the data obtained from the LVDB for various reports, including daily analysis of over limit current, feeder line traffic analysis, daily, weekly, and monthly reports on feeder over limit current, and feeder line current warnings.

Alarm Notifications: The Alarm function of DRC-015 assists operators with prompt information of the issues inside the LVDB room. This alarm can be alerted when having over limit current, power source off, and over temperature detection. The smart device provides warning notifications when the temperature reaches its limit threshold and triggers alarms when the temperature approaches dangerous levels. In addition, the DRC-015 records abnormal situations when the temperature peaks and drops rapidly, storing this data in its abnormal feature. These processes help prevent potential fire hazards while ensuring the safety of both personnel and equipment.

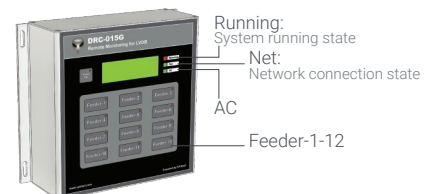
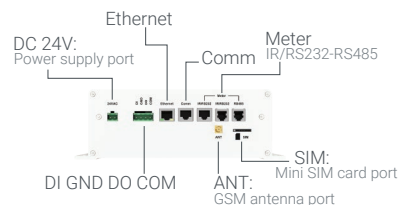


▲ DRC-015 (Distribution Station)

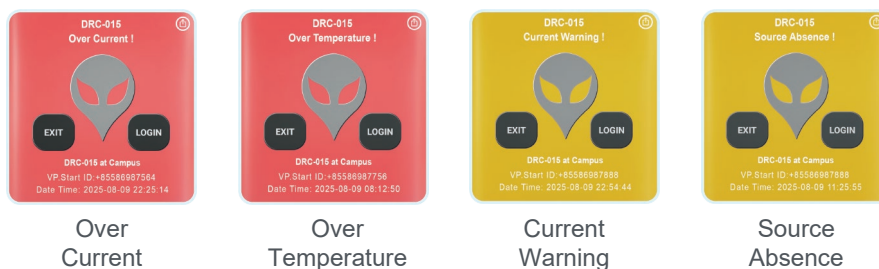


▲ DRC-015 (P.T.T)

Product Look and Dimension



DRC-015 Alarms Notification



Product Specification

Remote Monitoring Unit

Country of Origin	• Cambodia
Manufacturer's Name Technology	• VP.Start Technology
Model	• DRC-015G
Remote Control for LVDB Distribution Station	• Yes
Remote Control Via PC for LVDB, and can be Configured to Load Tracking System	• Yes
Voltage Supply Range	• 200 to 240 VAC
Operating Temperature	• 0 to 65 °C
Ambient Temperature Range	• -10 to +70 °C
Operating Humidity	• 30 to 95 %
Communication Interface	<ul style="list-style-type: none"> • Serial (.c1) RS232, Serial (.c2) RS485 • Optical Len Port • GSM/GPRS Communication • Ethernet Communication • GPIO Digital Input (1Ch) • GPIO Digital Output (1Ch)

PC Software Configuration Tools

PC Application	• Yes
----------------	-------

Data Monitoring

Power Source Voltage	• Power Source Voltage (Landis +Gyr, EDM I)
Power Source Current	• Power Source Current (Landis +Gyr, EDM I)
Room Temperature	• Yes
Feeders Current Flow	• Yes
Feeders Over Limited Current	• Yes

Analysis Tools

Daily Over Limited Current Analysis	• Yes
Feeder Line Traffic Analysis	• Yes
Daily, Weekly & Monthly Feeder Over Limited Current Report	• Yes
Feeder Line Current Warning	• Yes

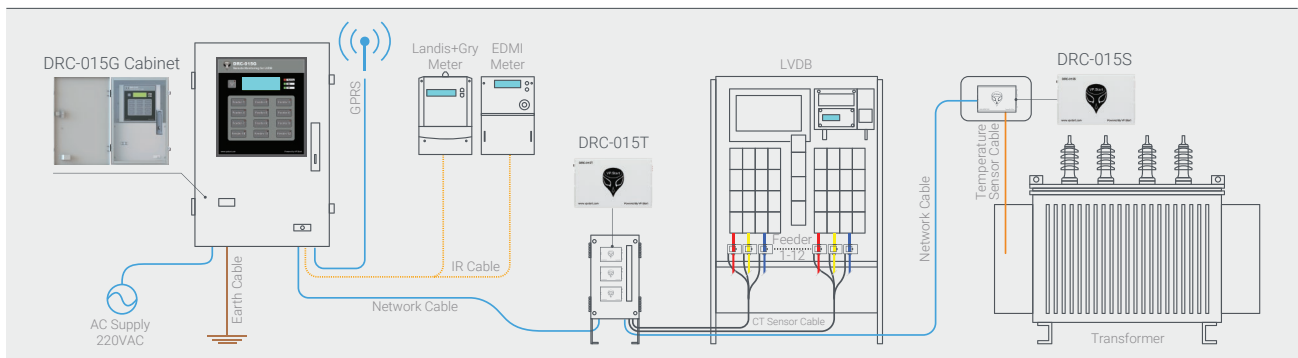
System Setting

Station Name	• Yes
Feeders Name	• Yes
Power Source OFF Alarm (on/off)	• Yes

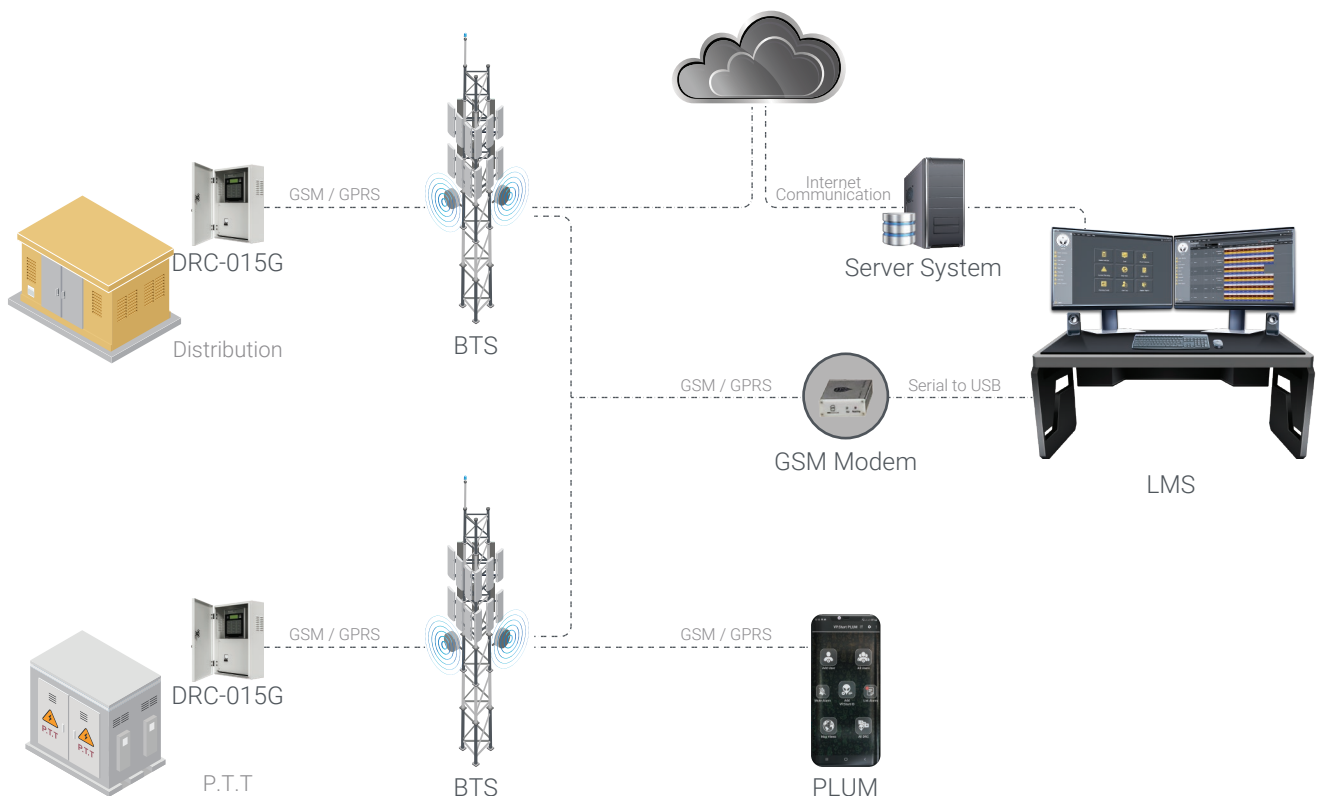
Over Limit Current Alarm (on/off)	• Yes
Over Limit Current Value	• 1 to 380 Amp
Current Warning Notification (on/off)	• Yes
Current Warning Value	• 1 to 380 Amp
Room Temperture Overheat Alarm	• 35 to 100 °C
Meter Interface Connection	• c2/.c1/Optical-Len
Data Upload/Refresh	• 15, 30, 45, 60 Min

System Alarm

Over Limit Current Alarm	• Yes
Power Source OFF Alarm	• Yes
Over Temperature Dectection & Alarm	• Yes



System Architecture








Visit Us



www.vpstart.com

 Tel	:(+855) 23 888 167 / (+855) 98 555 589
 Website	: www.vpstart.com
 Email	: sale@vpstart.com / info@vpstart.com