



SMART GRID MANAGEMENT SYSTEMS

SIMA Grid, SIMA City, SIMA Home, SIMA Universe, SIMA Big Data

DRCS              ...



DRS

(Distribution Remote System)





DRS

Distribution Remote System (DRS)

Exploring a game-changing Distribution Remote System (DRS) that is an advanced metering management system designed to revolutionize traditional energy meters management into a digitally operated system. The DRS simplified energy management by fully overseeing every status of the energy meter, effectively preventing issues and anomalies. Finding issues related to energy meters presents a significant challenge for electrical grid operators. Regularly going on-site to record data from energy meters or inspect their status is traditionally time-consuming and poses risks. Additionally, unexpected issues that arise with energy meters—such as meter errors, broken current transformers (CT), broken voltage transformers (VT), phase loss, or other related problems—are also considerable challenges for energy grid management.



This is where the DRS specializes. This robust system is designed to tackle the above challenges—not only streamlining energy metering management but also preventing unexpected hazards or risks that may occur with energy meters. With our Smart Grid IoT Controllers, the DRC-004G and DRC-012G, aging energy meters are transformed digitally in an instant. All information is transmitted seamlessly to the Distribution Remote System (DRS).

The DRS is not just a tool; it's a partner in the journey toward more sustainable energy grid management.



▲ Ensures stable energy meters are instantly converted to digital.



▲ Station Monitoring



DRS System



DRC-004G/DRC-012G



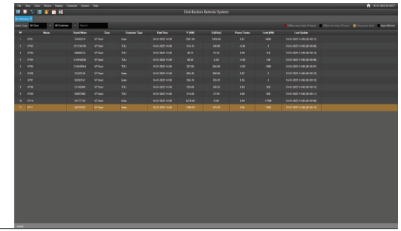
EDMI (MV/LV Meter)



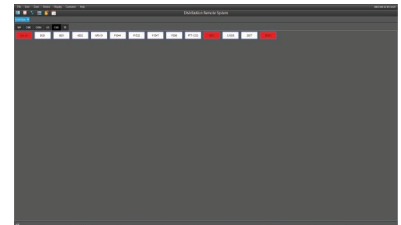
Landis+Gyr (MV/LV Meter)

Key Features

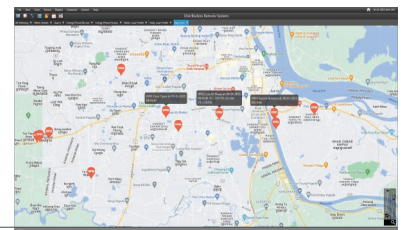
All Metering: Displays metering data, including Active Power (P), Reactive Power (Q), Power Factor (PF), and Power Limit, providing operators with key performance indicators.



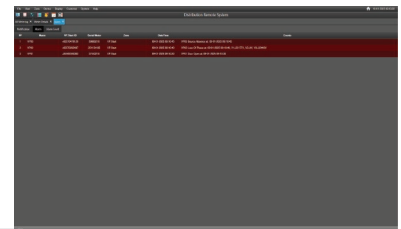
Grid View: Offers a comprehensive overview of multiple controllers simultaneously. Alarm notifications are indicated by a blinking red icon for immediate attention.



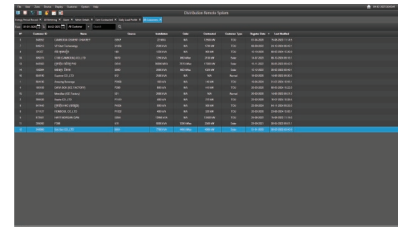
Map View: Integrates seamlessly with Google Maps to display the geographical locations of controllers, offering users an intuitive and interactive visualization.



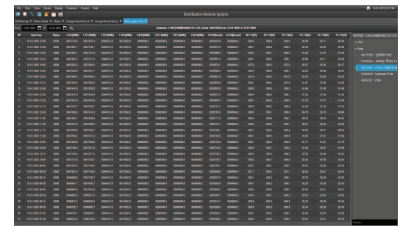
Alarm & Notification: Triggers alarms for critical events such as Loss of Phase, Source Supply Off, Low Current Warning, and Door Open. Notifications are generated when power consumption exceeds limits in MV/LM meters.



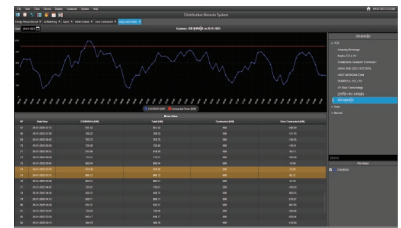
Customer List: Enables operators to view all registered customers, categorized by type or specific time periods for efficient management.



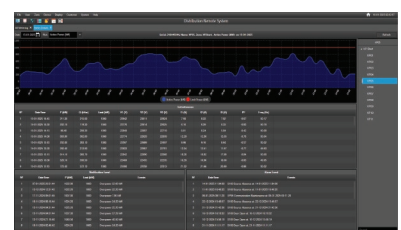
Meter Load Profile: Provides a historical load profile retrieved from Landis+Gyr and EDMi meters, offering a detailed analysis of meter data.



Customer Consumption: Displays daily and monthly power consumption data in graphs and tables. Operators can select specific dates for tailored insights.



Meter Detail: Provides detailed metering data, including Active Power (P), Reactive Power (Q), Power Limit, Voltage (V), Current (A), Power Factor (PF), and Frequency, updated every 15 minutes. Data can be presented as curves, tables, or through Peak Analysis for in-depth evaluation using DRS software.



Product Specification

Software Distribution Remote Control System

| | |
|-------------------|---|
| Brief Description | <ul style="list-style-type: none">• DRS Software for Configure with DRC-004G (Meter Landis +Gyr) and DRC-012G (Meter EDM) |
|-------------------|---|

Data Monitoring

| | |
|--|---|
| System Online Data Monitoring & Auto Refresh | <ul style="list-style-type: none">• Yes |
| Define Controller by Zone | <ul style="list-style-type: none">• Yes |
| GSM Real Time Meter Data Monitoring | <ul style="list-style-type: none">• Yes |
| Monitor Meter Data Measurement | <ul style="list-style-type: none">• Yes |
| Monitor Instantaneous Data with Meter ID and Meter Date-Time | <ul style="list-style-type: none">• Yes |
| Monitor Meter Energy Data with Energy TOU Rating | <ul style="list-style-type: none">• Yes |

Alarm & Notification

| | |
|---------------------------------------|--|
| Loss of Phase Alarm | <ul style="list-style-type: none">• Yes |
| Low Current Warning Alarm | <ul style="list-style-type: none">• Yes |
| Software Setting | <ul style="list-style-type: none">• Yes |
| Meter's Cabinet Door Opening Alarm | <ul style="list-style-type: none">• Yes |
| Loss of Phase Alarm | <ul style="list-style-type: none">• Yes |
| Low Current Warning Alarm | <ul style="list-style-type: none">• Yes |
| Software Setting | <ul style="list-style-type: none">• Yes |
| Meter's Cabinet Door Opening Alarm | <ul style="list-style-type: none">• Yes |
| Peak Load Notification | <ul style="list-style-type: none">• Yes |
| Alarm Indication on Map Window | <ul style="list-style-type: none">• Blinking Icon |
| Alarm Indication on Grid View Window | <ul style="list-style-type: none">• Blinking |
| Alarm Indication on Alarm list Window | <ul style="list-style-type: none">• Yes |
| Alarm Popup Window | <ul style="list-style-type: none">• System Alarm Popup with Alarm Detail |

Graphical & Analysis Tools

| | |
|--------------------------------------|--|
| Meter Selectable Data Plotting | <ul style="list-style-type: none">• Plot Almost (P, Q, PF, V, I, F) Meter Data |
| Select Meter to Plot Data | <ul style="list-style-type: none">• Yes |
| Plotting Meter Data Selected by Date | <ul style="list-style-type: none">• Yes |
| Peak Load Indicator Tools | <ul style="list-style-type: none">• Yes |
| Exportable Meter Data Plotting | <ul style="list-style-type: none">• Yes |

Event log & Reporting

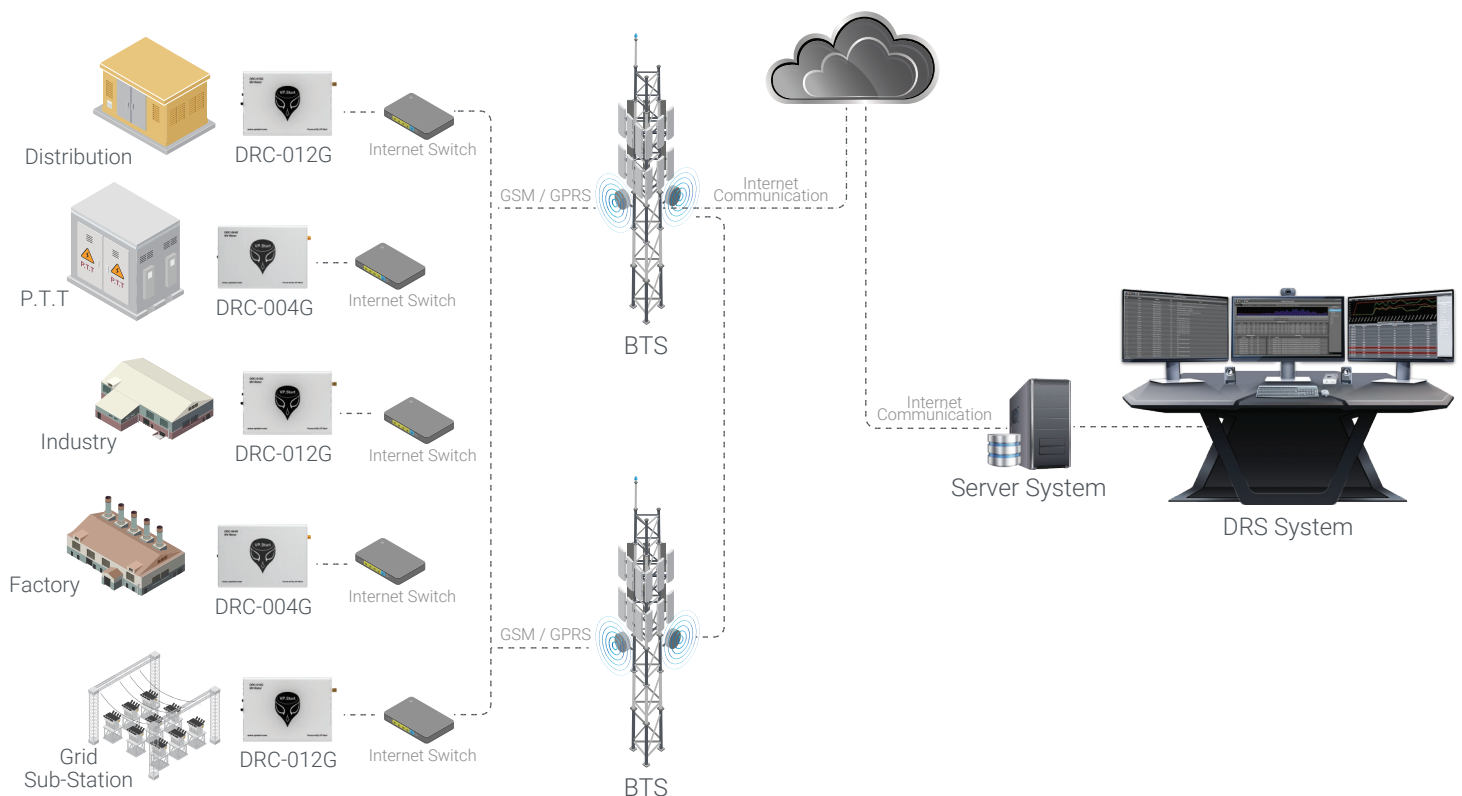
| | |
|---------------------------|---|
| User Operations Event Log | <ul style="list-style-type: none">• Yes |
| Data Peak Load Event Log | <ul style="list-style-type: none">• Yes |
| Meter Alarms Event Log | <ul style="list-style-type: none">• Yes |

| | |
|----------------------------------|-------|
| Meter Online Data History | • Yes |
| Event Log Selectable by Meter | • Yes |
| Event Log Selectable by Schedule | • Yes |
| Event Log Exportable | • Yes |

System Setting

| | |
|-------------------------------------|-------------------|
| Loss of Phase Alarm (On/Off) | • Yes |
| Low Current Warning Alarm (On/Off) | • Yes |
| Source Supply OFF Alarm (On/Off) | • Yes |
| Door Opening Alarm (On/Off) | • Yes |
| Peak Load Notification (On/Off) | • Yes |
| Low Current Value Setting | • 0.01 to 100 A |
| Power Peak Load Value Setting | • 0.1 to 10,000 A |
| VT & CT Ratio Value Setting | • Yes |
| System Auto Backup Schedule | • Yes |
| Schedule Meter Data Refreshing Time | • 15, 30, 60 |

System Architecture








Visit Us



www.vpstart.com

| | |
|---|---|
|  Tel | :(+855) 23 888 167 / (+855) 98 555 589 |
|  Website | : www.vpstart.com |
|  Email | : sale@vpstart.com / info@vpstart.com |