



SMART GRID MANAGEMENT SYSTEMS

SIMA Grid, SIMA City, SIMA Home, SIMA Universe, SIMA Big Data

DRCs              ...



ROSE

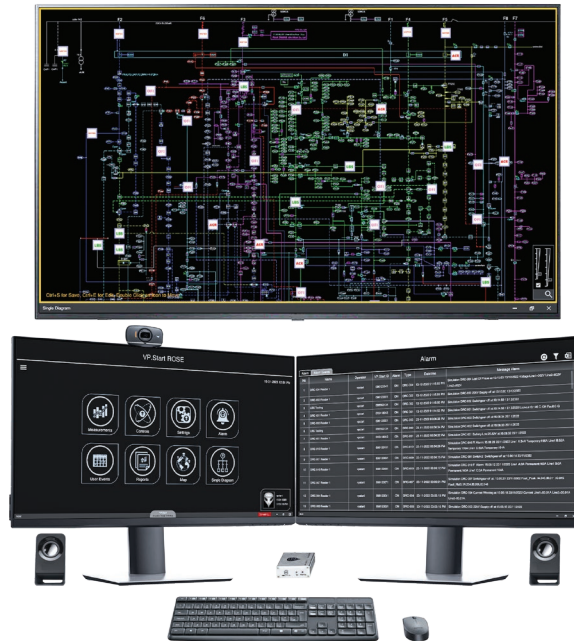
(Remote Operation System Enhancer)





ROSE

Remote Operation System Enhancer



ROSE is a cost-effective software solution tailored for small and medium-sized electrical utilities, special economic zones, and other facilities.

Designed with a focus on long-term growth, ROSE optimizes efficiency and supports scalable business development.

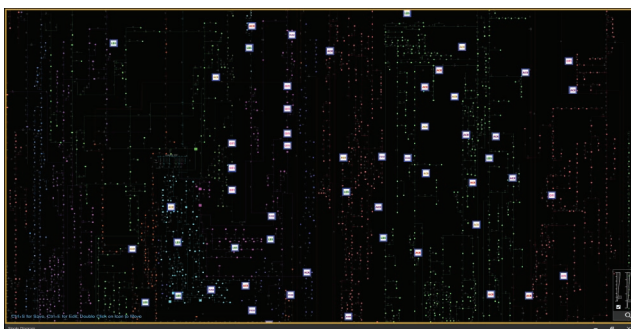
It integrates all DRC solutions into a unified platform, providing operations and management teams with robust data collection and analysis capabilities.



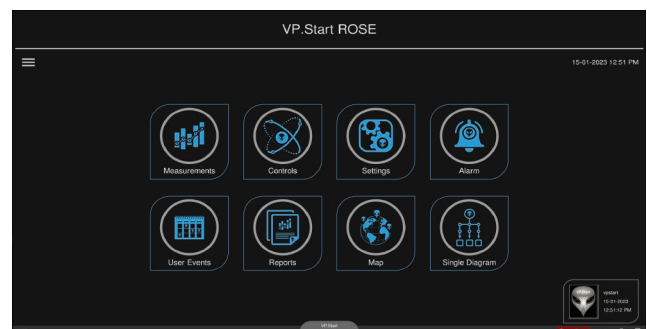
▲ Managing the electricity distribution network becomes easier

Key Features

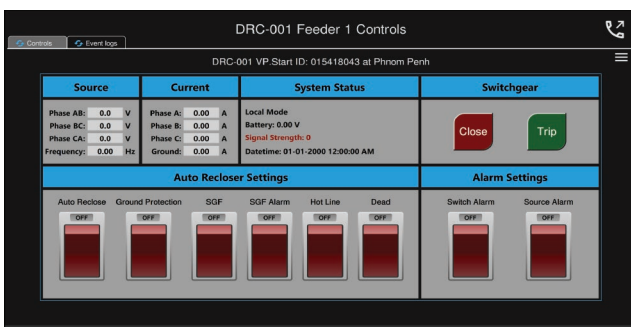
Remote Control:	Facilitates remote trip/close operations for Auto Recloser, LBS, Fusesavers, and Sectionalizers, along with access to device settings and event logs.
Measurements:	Monitors key electrical parameters such as Current, Voltage, Power (Active, Reactive, Apparent), Power Factor, and Frequency, supporting efficient energy management.
Setting:	Enables operators to modify electrical equipment parameters via DRC solutions, including hosting, protection, and current settings.
Reports:	Local reporting of network data, including Current, Voltage, Power, Power Factor, and Frequency, provides essential insights for comprehensive analysis.
User Event:	Logs all operator actions with detailed timestamps, enhancing accountability and system transparency.
Alarm:	Delivers instant fault notifications and maintains a detailed fault log for future analysis.
Call Control Function:	Supports direct calls to control switchgear operations and monitor real-time network status.
Single Diagram:	Displays electrical equipment schematically for efficient fault identification and network management.
Map View:	Integrates with Google Maps for precise location tracking and quick identification of impacted areas.
Analyze:	Aggregates alarms and key data for network improvement, enabling efficient problem-solving and expansion.
Backup & Restore:	Ensures data protection through server backups and quick recovery of critical configurations.



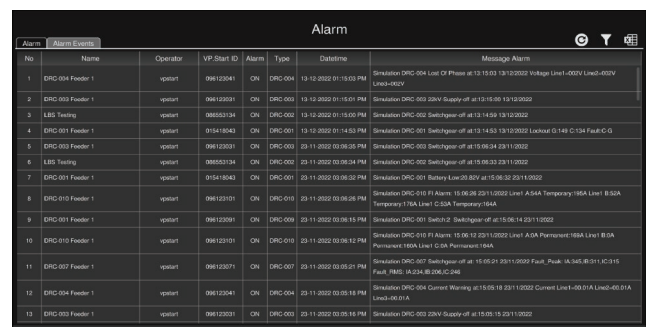
▲ Single Diagram



▲ VP.Start ROSE



▲ Control



▲ Alarm

Product Specification

Remote Control Unit

Supported Devices	<p>A. Auto Recloser:</p> <ul style="list-style-type: none"> - Auto Schneider (ADVC) - Auto ENTEC - Auto Cooper <p>B. Load Break Switch:</p> <ul style="list-style-type: none"> - Model ABB (22kV/35kV) - Model S&S Korea - Model Precise (SREC-24) - Model Precise ORAP21.396.6MT - Model Precise SLBS.24 - Model Schneider PLA - Model Schneider RL-Series - Model ZW32 - Model ENTEC KPS - Model JK-SGS (Cover) - Model JK-SGS (Uncover) - Model LBS SEL - Model SPG-24 <p>C. Fusesaver:</p> <ul style="list-style-type: none"> - SIEMENS Fusesaver <p>D. Over Head Fault Indicator:</p> <ul style="list-style-type: none"> - Overhead Fault Indicator
Operation Security	<ul style="list-style-type: none"> • System Security with Login Account (Username and Password). • System Login with Operator Photo Record. • User Operation Event Log. • Switchgear Control with System Validation and Operator Photo Record.
Communication Security	<ul style="list-style-type: none"> • Dynamic Encryption Data Communication Security.
Operation Security	<p>Data Communication Protocol Support:</p> <ul style="list-style-type: none"> - VP.Start Protocol - DNP3 - Modbus - IEC 60870-5-101/104
System Event Log and Report	<p>A. Operator Action Record:</p> <ul style="list-style-type: none"> - System Login/Logout. - System Control Event Record. <p>B. Power Line Event Record:</p> <ul style="list-style-type: none"> - Controller Alarm Record. - Switchgear OFF Event Record. - Line Fault Alarm Record.
RPM Grid Function	<ol style="list-style-type: none"> 1. CONTROL 2. SETTING 3. MONITORING 4. REPORTING & LOG 5. ALARM 6. SOFTWARE MANAGEMENT

Single Line Support	A. Support Single Line Diagram. B. Controller Located Indication on Single Line. C. Controller Information Indicated. D. Controller Alarm Indication (Blinking) on Single Line. E. Support Action: - Click to go to Controller. - Point to Show Controller's Information. - Zoom In/Out.
RPM Grid Function	A. Support google Map. B. Controller Located Indication on Map. C. Controller Information Indicated. D. Controller Alarm Indication (Blinking). E. Support Action: - Click to go to Controller. - Point to show Controller's Information. - Zoom In/Out.
Map Support	A. Support google Map. B. Controller Located Indication on Map. C. Controller Information Indicated. D. Controller Alarm Indication (Blinking). E. Support Action: - Click to go to Controller. - Point to show Controller's Information. - Zoom In/Out.
Call Control Function	A. Call Line Report (Status, Measurement). B. Call Switchgear Report. C. Call Switchgear Control.

RPM Modem

Communication Modem	• GSM/GPRS Modem
Communication Support	• GSM/GPRS (900, 1800) MHz
Modem Communication Interface	• USB Communication
Modem Power Operation	• 5 VDC
Modem SIM Support	• Micro SIM Card
Modem SIM Slot	• 1 SIM Card
Ambient Temperature Range	• 0 to 55 °C
Operating Humidity	• < 95 %
Data Storage	• Internet Hosting (Cloud) & Local Storage



Visit Us

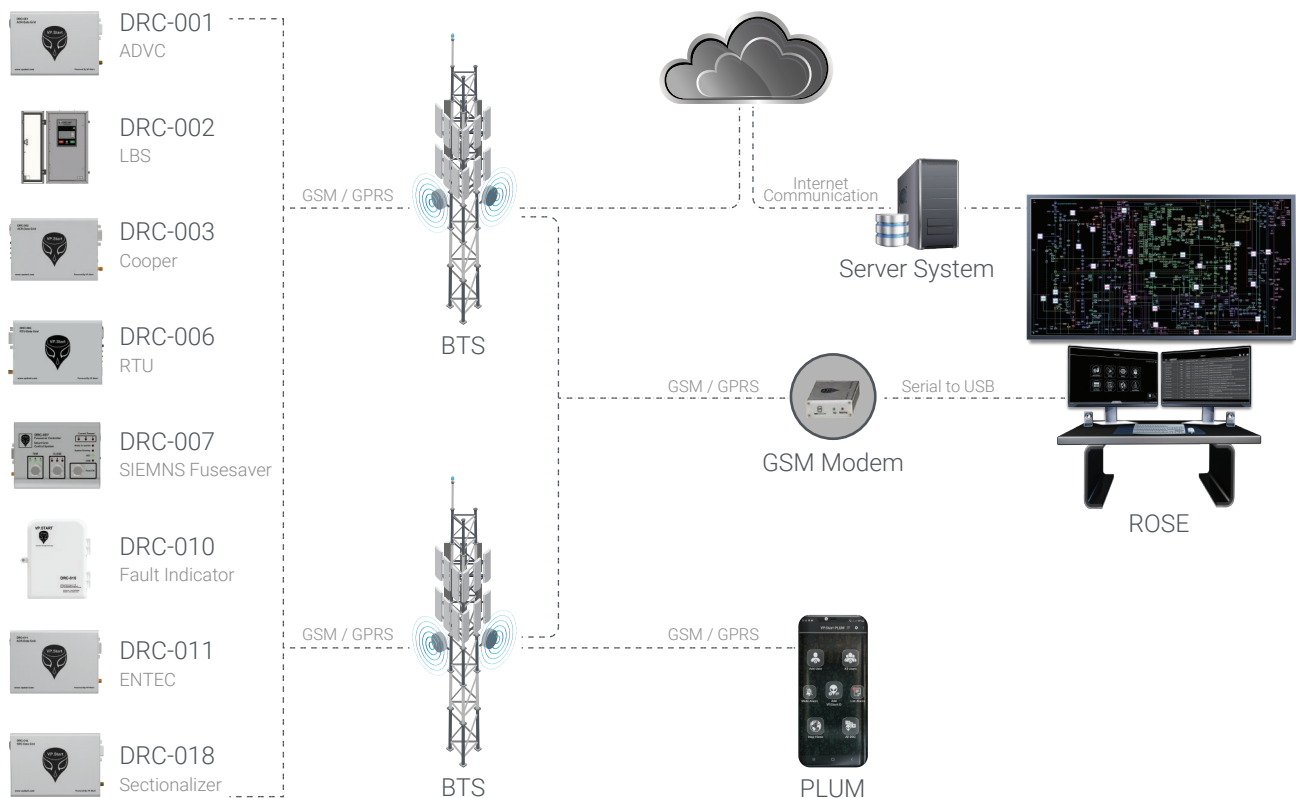


www.vpstart.com

☎ Tel	:(+855) 23 888 167 / (+855) 98 555 589
🌐 Website	: www.vpstart.com
✉ Email	: sale@vpstart.com / info@vpstart.com

Data Security	<ul style="list-style-type: none"> • Data Backup • Data Encryption
Modem SIM Slot	<p>A. Data Reporting:</p> <ul style="list-style-type: none"> - Daily Report - Weekly Report - Monthly Report <p>B. Recording Data:</p> <ul style="list-style-type: none"> - Apparent Power (kVA) - Active Power (kW) - Reactive Power (kVar) - Frequency (Hz) - Current (Amp) - Voltage (V) - Power Factor
Controller Event Log	<ul style="list-style-type: none"> • Yes

System Architecture





DRCs Installed

10,000+



Smart Grid Systems Installed

17



▲ Direct control from the control room over the Remote Operation System Enhancer