



DRC-012G

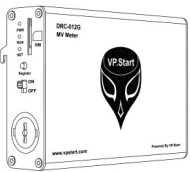
Installation Instruction



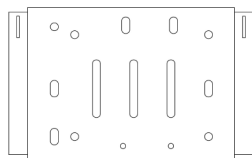
I. Introduction

The DRC-012G is a smart controller for EDM I meters. The DRC-012G version can be easily integrated to specifically monitor import or export power flows to better meterize downstream consumers. The DRC-012G version of the smart controller uses GSM & GPRS communication as a medium of data transmission while allowing operators to communicate, control and monitor EDM I meter assets at any location. In addition, the DRC-012G smart controller enables operators to view power quality data, load information, power losses and better understand trends in power consumption. The DRC-012G has helped operators reduce OPEX costs, execute better preventive maintenance, enhanced decision making & overall improvement in resource planning.

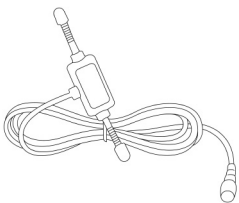
II. Accessory



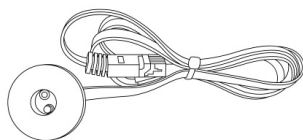
DRC-012G Controller
(1pc)



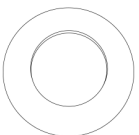
Controller Support
(1pc)



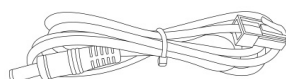
GSM Antenna
(1pc)



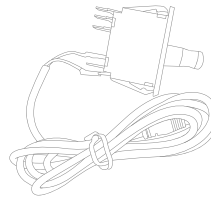
Infrared Sensor (1pc)



Infrared Sensor
Shield (1pc)



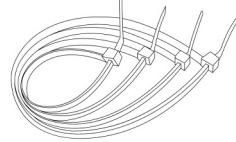
DC Power Cable
(1pc)



Door Sensor (1pc)



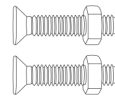
Door Sensor Support
(1pc)



CB Screw Support
(4pcs)



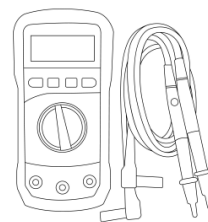
Bugle Head Screw
(4pcs)



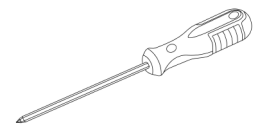
Bugle Head Screw
(2pcs)

III. Installation Procedure

Tools Support



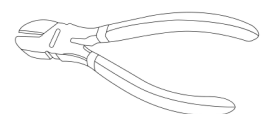
Multimeter



Screwdriver PH2



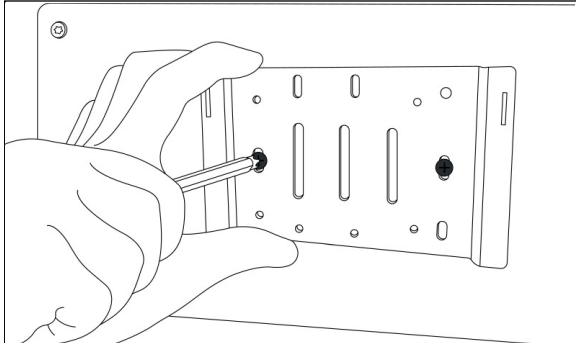
Hand Riveter



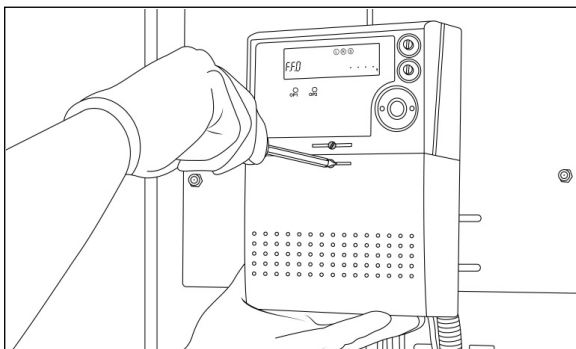
Diagonal Cutting
Pliers

📍 Controller Installation Process

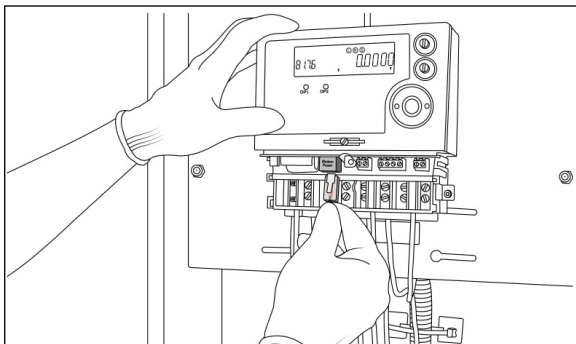
- 01** Mount the controller support into the propriety space in the Meter cabinet.



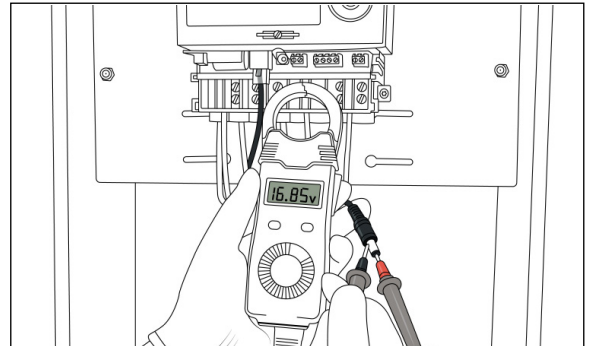
- 02** Remove meter terminal cover (Casborn).



- 03** Connect DC Power Cable to meter Modem Power port.



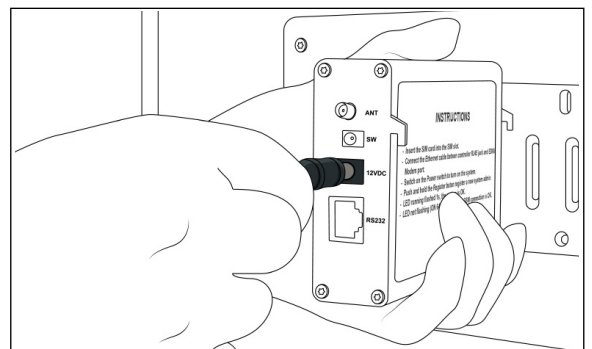
- 04** By meter Modem Power port, check the voltage through DC Power Cable.



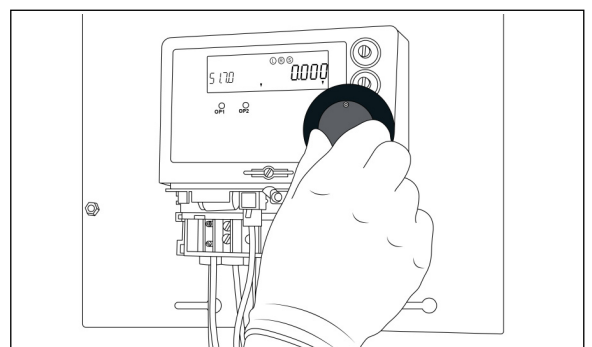
⚠️ NOTE

- 📍 The suitable voltage shall be 12VDC to 24VDC.

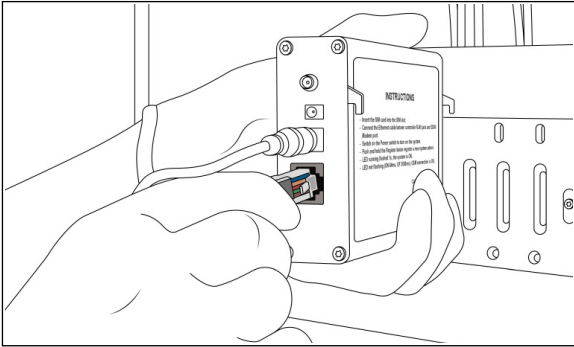
- 05** Connect DC Power Cable to DC INPUT port on DRC-012G.



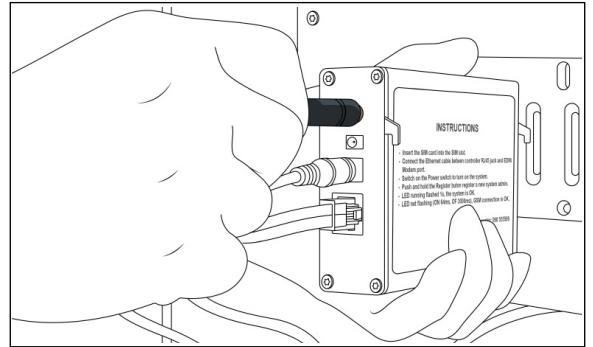
- 06** Mount Infrared Sensor and its shield on Meter.



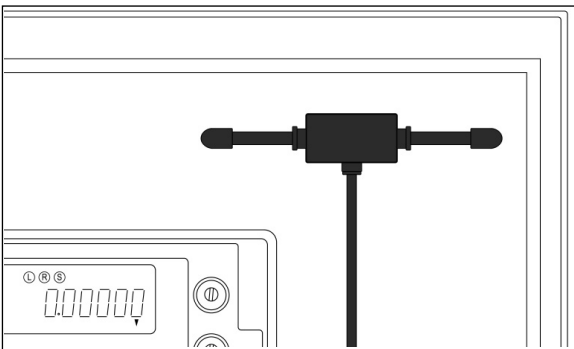
07 Connect Infrared Sensor to Primary port on DRC-012G.



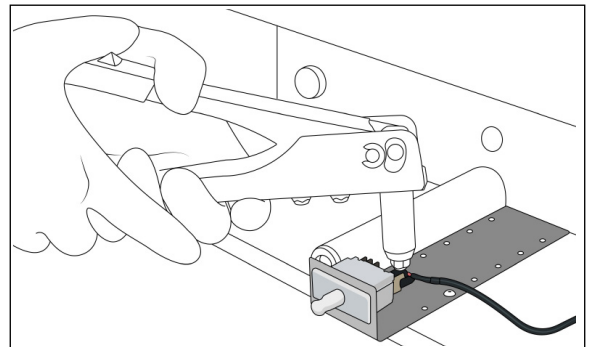
09 Connect GSM Antenna to ANT connector on DRC-012G.



08 Install GSM Antenna to the appropriate area on site.



10 Mount Door Sensor and its Support at the appropriate area in the Meter Cabinet.



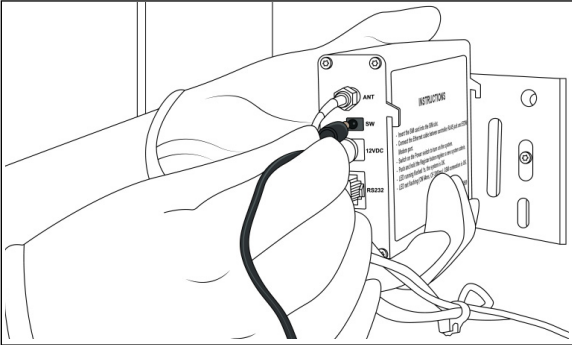
NOTE

📍 The area that allows the antenna to get better signal strength.

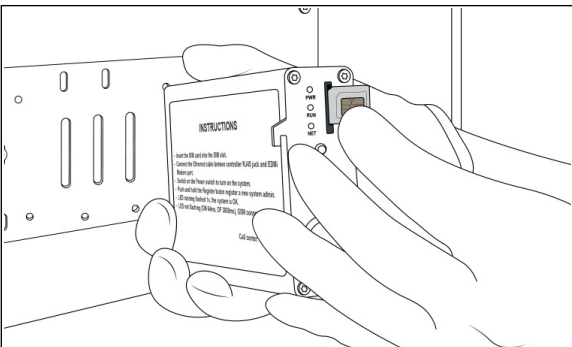
NOTE

📍 The Door Sensor needs to be properly pushed by the door whenever the door closes.

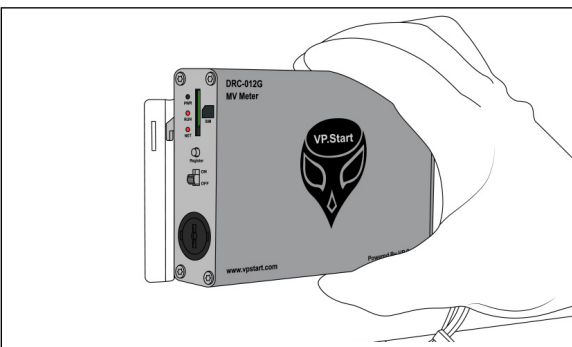
11 Connect Door Sensor to SW port on DRC-012G.



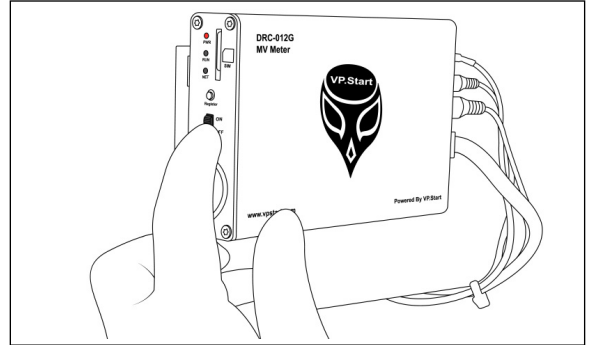
12 Insert SIM into SIM Slot on DRC-012G.



13 Mount the DRC-012G on the controller support.



14 Start up the DRC-012G by Switching the Power button.



NOTE

- ❗ The DRC-012G is running normally if the running LED is blinking every 1s.
- ❗ The GSM connection is Good if Net LED flashing every 3s.
- ❗ The GSM Module is Okay if GSM LED is ON.

