



# DRC-012G USER GUIDE




# COPYRIGHT

**Copyright @ VP.Start Technology Co.,Ltd. 2022. All rights reserved.**

No part of this document may be reproduced or transmitted in any form or by any means without the prior written consent of VP.Start Technology Co.,Ltd.

## **Trademarks and Permissions.**

 and other VP.Start trademarks are the property of VP.Start Technology Co.,Ltd.

All other trademarks and trade names mentioned in this document are the property of their respective holders.

**VP.Start Technology Co.,Ltd.** provides customers with comprehensive technical support and services. For any assistance, please feel free to contact our company headquarters.

### **VP.Start HQ**

Address: #15, Street 604, Sangkat Boeung Kok 2, Khan Toul Kork,  
Phnom Penh, 120408, Cambodia.

### **VP.Start Sen Sok Valley Campus**

Address: #29, Street 1946, Sangkat Phnom Penh Thmey, Khan Sen Sok,  
Phnom Penh, 120408, Cambodia.

- Phone: (+855) 23 888 167 / 86 666 677 / 98 555 589
- Website: [www.vpstart.com](http://www.vpstart.com)
- Email: [sale@vpstart.com](mailto:sale@vpstart.com) / [info@vpstart.com](mailto:info@vpstart.com)

COPYRIGHT

VP.Start Proprietary

Copyright @ VP.Start Technology Co.,Ltd.



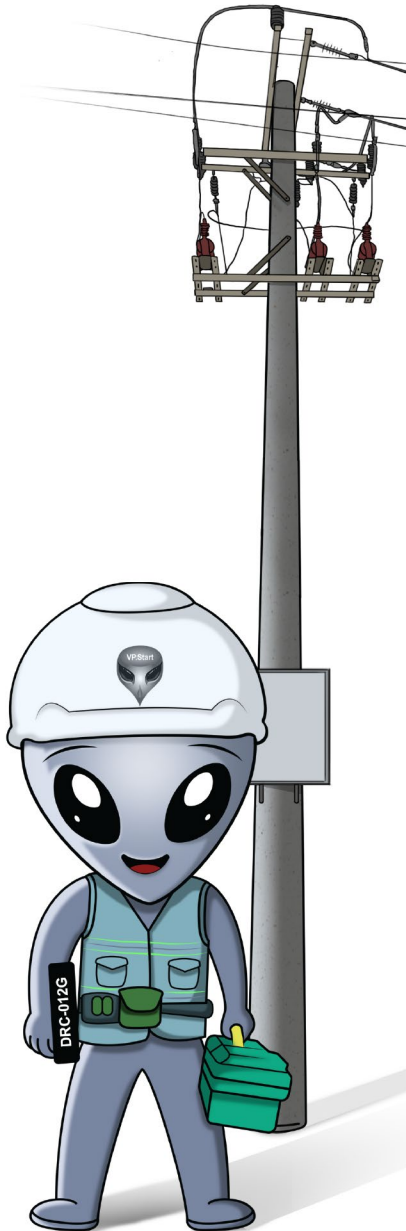
# CONTENTS

# CONTENTS

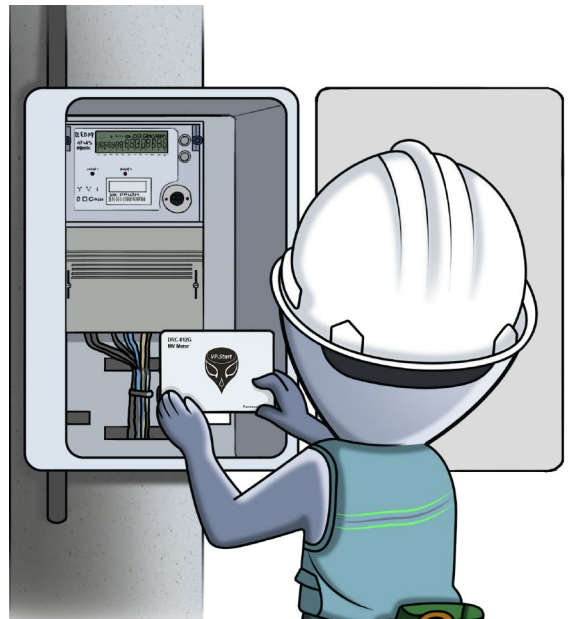
INTRODUCTION	1
PRODUCT OVERVIEW	2
HARDWARE DIMENSIONS	3
SPECIFICATIONS & FEATURES	4
INSTALLATION INSTRUCTIONS	8
APP USER GUIDE	16
TROUBLESHOOTING	55
CONTACT US	56



# INTRODUCTION



The DRC-012G is a smart controller for EDM1 meters. The DRC-012G version can be easily integrated to specifically monitor import or export power flows to better meterize downstream consumers. The DRC-012G version of the smart controller uses GSM & GPRS communication as a medium of data transmission while allowing operators to communicate, control and monitor EDM1 meter assets at any location. In addition, the DRC-012G smart controller enables operators to view power quality data, load information, power losses and better understand trends in power consumption. The DRC-012G has helped operators reduce OPEX costs, execute better preventive maintenance, enhanced decision making & overall improvement in resource planning.



# PRODUCT OVERVIEW

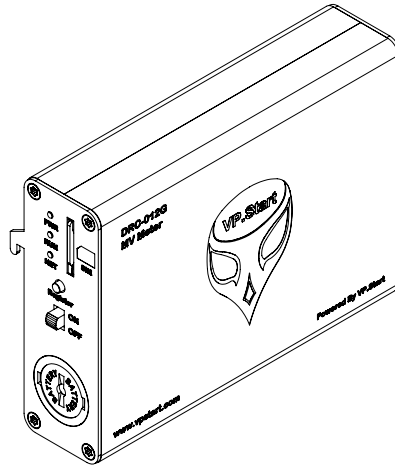


DRC-012G BOX PACKAGING

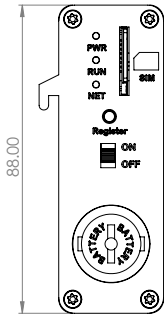
DRC-012G DEVICE



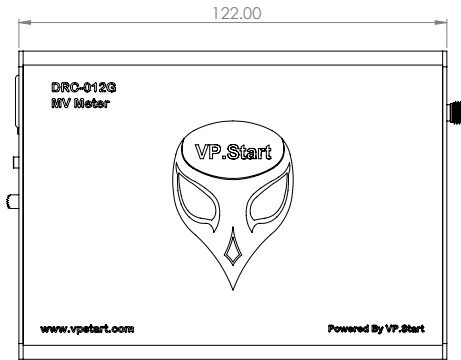
# HARDWARE DIMENSIONS



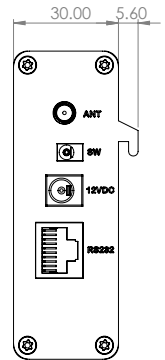
3D View



Side View



Front View



Side View



# SPECIFICATIONS & FEATURES

## Description

## Specifications

### Remote Control Unit

Remote Control for Meter (EDMI)	Remote Control via Smartphone or PC for MV Meter (EDMI) can be Configured to DRS Software.
Brand Name	DRC-012G
Manufacturer/Country	Cambodia
Reference Standards	IEC 60870-5-101/104 IEC 61850 IEC 61131-3
Voltage Supply Range	12 to 14 (Vdc)
Operating Frequency Bandwidth	GSM/Internet/Call to Reboot System 850/900/1800/1900MHz
Ambient Temperature Range	-10 to +70 °C
Operating Humidity	30 to 95 (%)
Operation Temperature	0 to 65 (°C)
Communication Interface	Serial (RS232) Optical Read Probe (IR-Reader) GSM Communication GPRS Communication
Status LEDs	System Running: Blinking 1s System Power: Red LED is ON System Network: Green LED Flashing



Supporting Standard Protocols

The Module can Change to Standard Protocol IEC-104, DNP3 and Modbus by Using Bypass Communication Such as Fiber Optic, Access Point, RF, GPRS and so on.

## App & Software Tools Interface:

Supporting PC Application

DRS Software

Mobile Application

Android

## Remote Control Functions & Features

### Data Monitoring Features:

Current

Yes

Voltage

Yes

Power Factor

Yes

Frequency

Yes

Active Power

Yes

Reactive Power

Yes

### Energy Monitoring Features:

Active Energy Import

Yes

Active Energy Export

Yes

Reactive Energy Import

Yes





Reactive Energy Export	Yes
<b>Monitoring Features:</b>	
Data Energy TOU Rating	Optional (DRS Available)
Meter Serial Number	Yes
Meter Date & Time	Yes
<b>System Setting Features:</b>	
Tracking Ability	Yes
Source Supply OFF Alarm (On/Off)	Yes
Loss of Phase Alarm (On/Off)	Yes
Meter Model Support	MK10A/MK10E/MK6N
Low Current Warning Setting Value	0.01-100 A
Meter Interface Connection	Serial/IR-Reader
<b>Software Management:</b>	
Add/Remove User	Yes
Add/Remove Controller (DRC-012G)	Yes
View all Controllers (DRC-012G)	Yes
View all Users	Yes



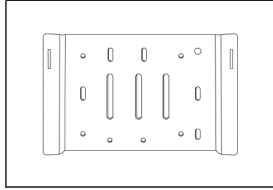
Check and top up balance	Yes
<b>Alarm Notifications:</b>	
Source Supply OFF Alarm	Yes
Loss of Phase Alarm	Yes
Low Current Warning Alarm	Yes
Door Open Alarm	Yes
<b>Physical Specifications:</b>	
Mounting Position	The Remote Control (DRC-012G) is Connected Inside the MV Metering Cabinet (EDMI).
Dimensions	H=88mm x L=122mm x W=30mm
Weight	200mg

# INSTALLATION INSTRUCTIONS

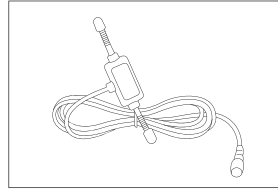
## ACCESSORIES



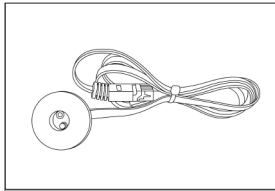
DRC-012G Controller (1pc)



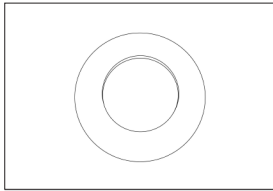
Controller Support (1pc)



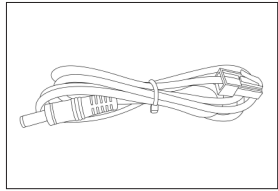
GSM Antenna (1pc)



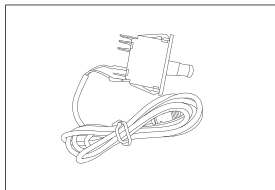
Infrared Sensor (1pc)



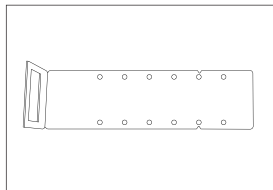
Infrared Sensor Shield (1pc)



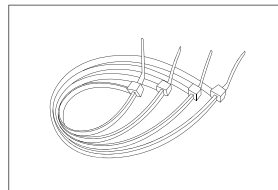
DC Power Cable (1pc)



Door Sensor (1pc)



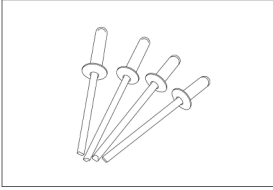
Door Sensor Support (1pc)



Cable Tie (4pcs)



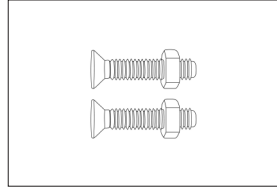
# INSTALLATION INSTRUCTIONS



Blind Rivets (4pcs)



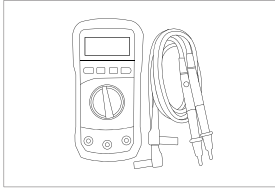
Bugle Head Screw (2pcs)



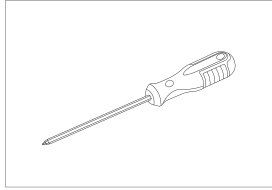
Bugle Head Screw (2pcs)



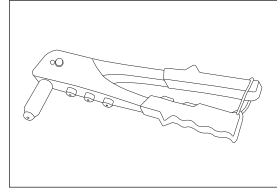
## SUPPORTING TOOLS



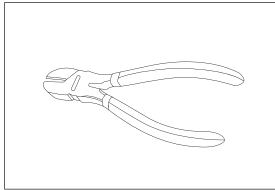
Multimeter



Screwdriver PH2



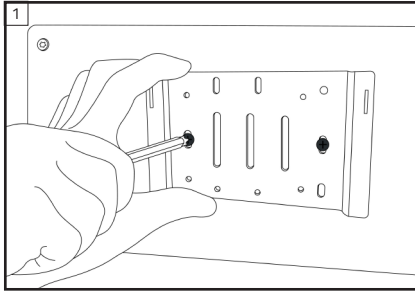
Hand Riveter



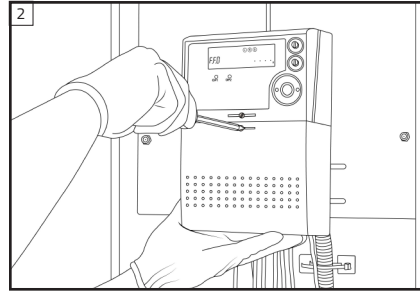
Diagonal Cutting Pliers



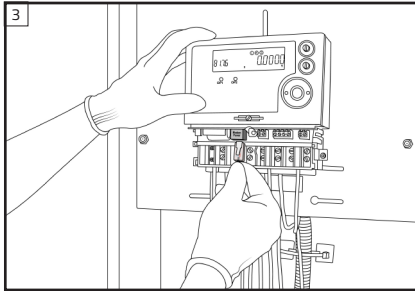
## CONTROLLER INSTALLATION PROCESS



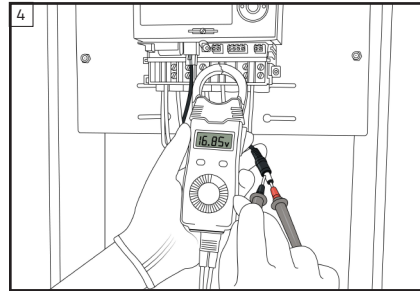
Mount the controller support into the propriety space in the Meter cabinet.



Remove meter terminal cover (Casborn).



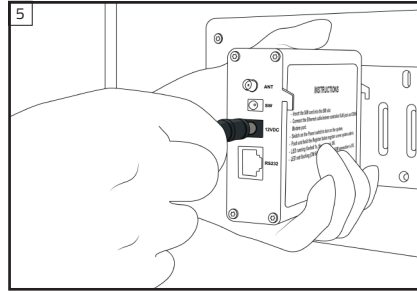
Connect DC Power Cable to meter Modem Power port.



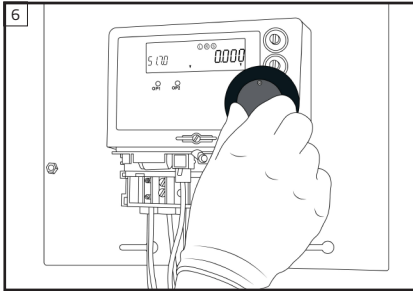
By meter Modem Power port, check the voltage through DC Power Cable.

**NOTE**

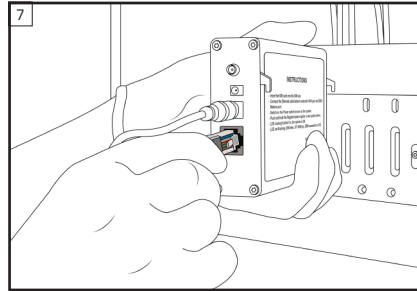
The suitable voltage shall be 12VDC to 24VDC.



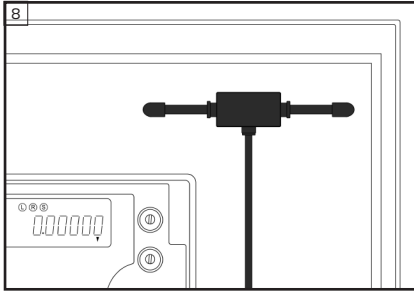
Connect DC Power Cable to DC INPUT port on DRC-012G.



Mount Infrared Sensor and its shield on Meter.



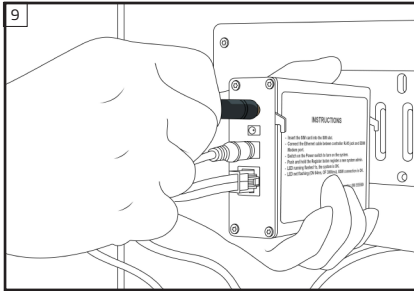
Connect Infrared Sensor to Primary port on DRC-012G.



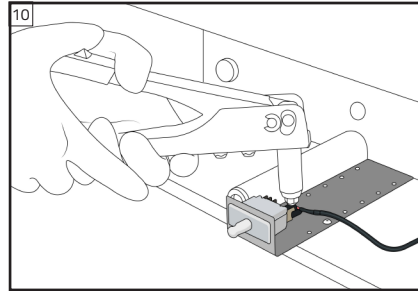
Install GSM Antenna to the appropriate area on site.

**NOTE**

The area that allows the antenna to get better signal strength.



Connect GSM Antenna to ANT connector on DRC-012G.



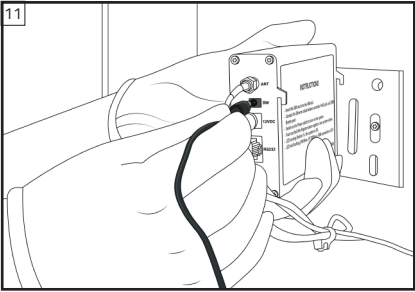
Mount Door Sensor and its Support at the appropriate area in the Meter Cabinet.



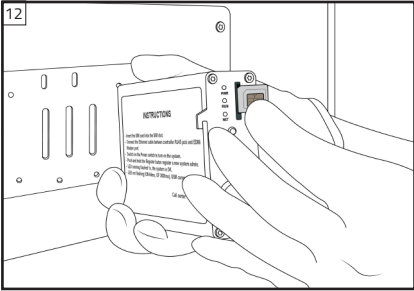


**NOTE**

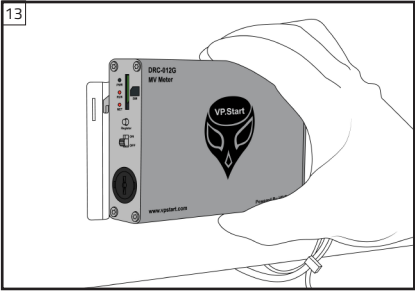
The Door Sensor needs to be properly pushed by the door whenever the door closes.



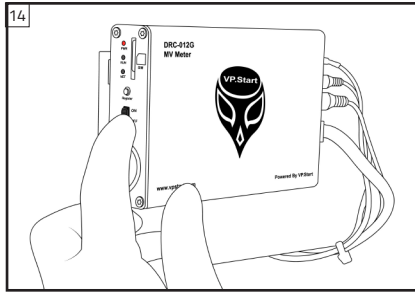
Connect Door Sensor to SW port on DRC-012G.



Insert SIM into SIM Slot on DRC-012G.



Mount the DRC-012G on the controller support



Start up the DRC-012G by Switching the Power button.

## NOTE

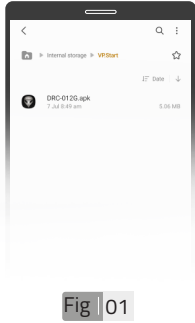
- ❖ The DRC-012G is running normally if the running LED is blinking every 1s.
- ❖ The GSM connection is Good if Net LED flashing every 3s.
- ❖ The GSM Module is Okay if GSM LED is ON.



# APP USER GUIDE

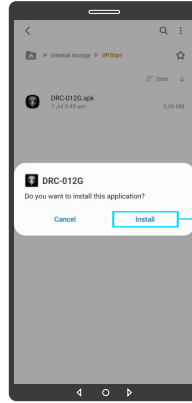
## Mobile Phone Interface Usage

### 01 How to Install DRC-012G App on Smartphone



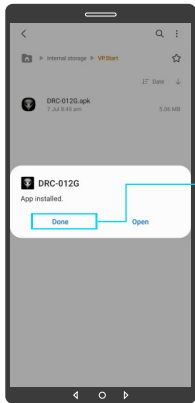
Click on "DRC-012G .apk" to install.

Fig | 01



Click on "Install".

Fig | 02



Click on "Done" to finish.

Fig | 03



DRC-012G App installed.

Fig | 04



**02 Create User Account**



Fig 05

Click on "DRC-012G App" to open App.

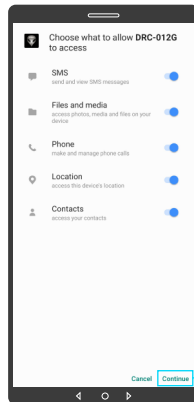


Fig 06

If the system pop up allow DRC-012G to access.

Then click on "Continue".



Fig 07

Create User Account login interface.

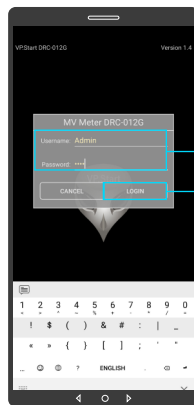


Fig 08

Create: Username and Password.

Then click on "LOGIN".



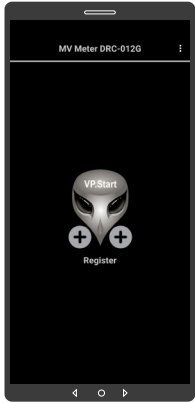


Fig | 09

**NOTE**

When installing the DRC-012G smartphone application for the first time, users will have to register the first DRC-012G controller before they can access other functions.

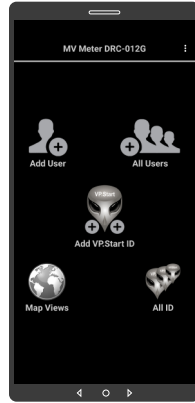


Fig | 10

**NOTE**

After the first controller is registered, users can access other functionalities as shown in Fig. 10.

### 03 Login to App

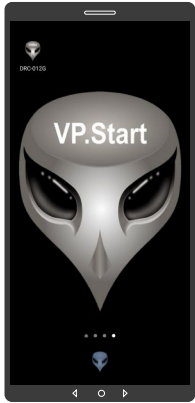


Fig | 11

Click on "DRC-012G App" to open App.

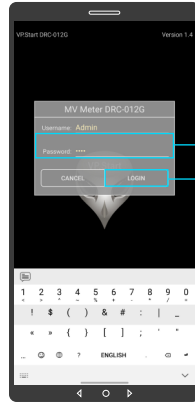


Fig | 12

Input the Password.

Click on "LOGIN".

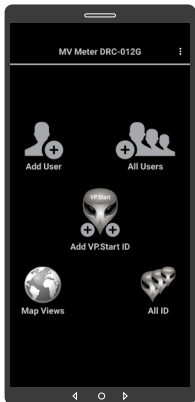


Fig 13

DRC-012G App functions.

04 Service

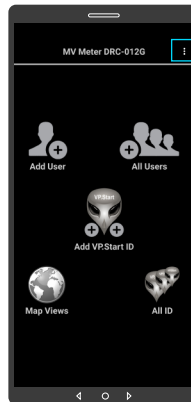


Fig 14

Click here to view "Help, Service and Exit".

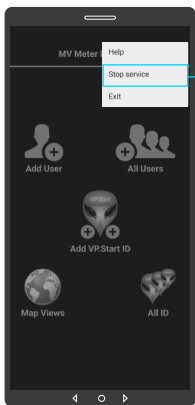


Fig 15

After the device(s) has been registered. Alarm service is enabled by default. To stop it, click on Stop service to stop receiving automated alarms from the controller through the smartphone app.

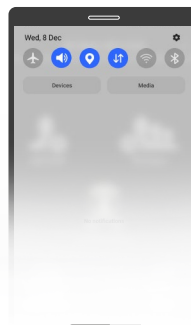


Fig 16

Alarm service is not running when your smartphone has not enabled DRC-012G alarm service as shown in Fig. 16.



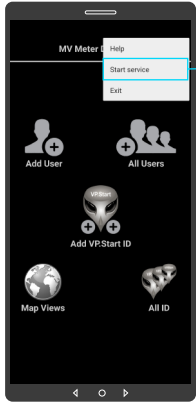


Fig | 17

To start alarm service. Click to view "Help, Service and Exit". Click on "Start service" to start receiving automated alarms from the controller through the smartphone app.

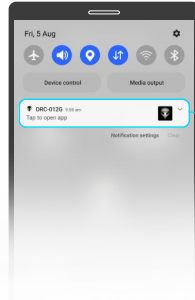


Fig | 18

Alarm service is running when your smartphone has enabled DRC-012G alarm service as shown in Fig.18.

## 05 Adding Users

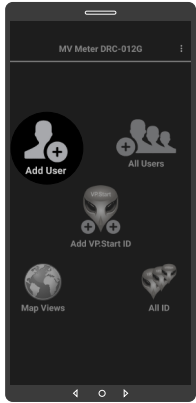


Fig | 19

Click to open "Add User".

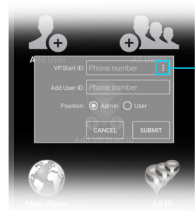


Fig | 20

Click here to view all VP.Start ID (Phone Number).

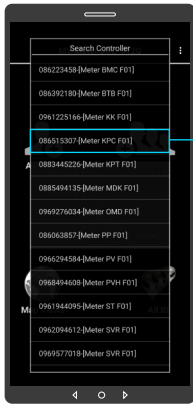


Fig 21

Click to choose a VP.Start ID.



Fig 22

**NOTE**  
 Scroll up or down to view more VP.Start ID.



Fig 23

VP.Start ID chosen.

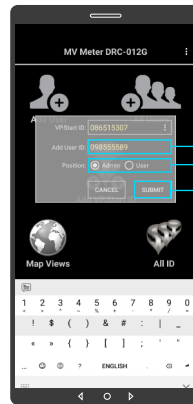


Fig 24

Write user phone number in "Add User ID".  
 Choose user position as Admin or User.  
 Click on "SUBMIT" and confirm by "OK" button.





Fig | 25

**NOTE**

The application will display "Done" as a pop up notification to confirm the registration of the new user into the system for a specific controller.

## 06 All Users

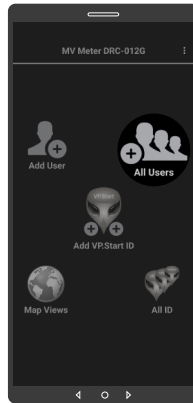


Fig | 26

Click to open "All Users".



Fig | 27

Click here to view all VP.Start ID (Phone Number).

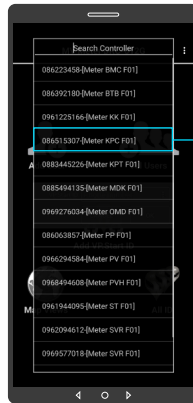


Fig | 28

Choose a VP.Start ID.



Fig | 29

Confirm by "OK" button.



Fig | 30

Click on Refresh button. And confirm by "OK" button.

## 07

### Delete User



Fig | 31

All Users view.

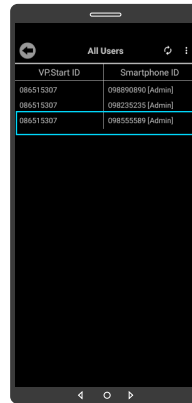
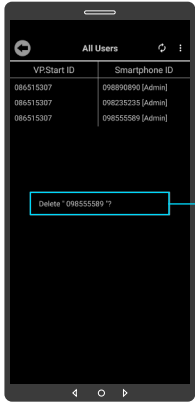


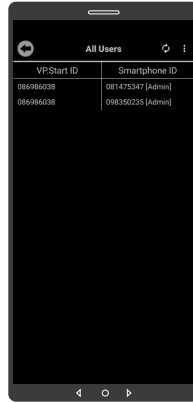
Fig | 32

To delete user from your DRC-012G, hold on an user number.



Click on Delete "User phone number" and confirm by "OK" button.

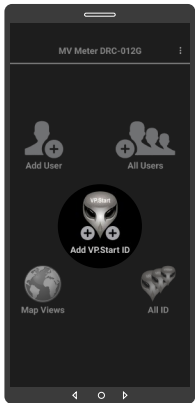
Fig | 33



User deleted.

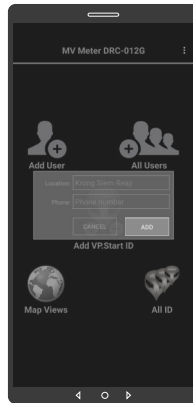
Fig | 34

## Add VP.Start ID



Click to open "Add VP.Start ID".

Fig | 35



Add VP.Start ID interface.

Fig | 36

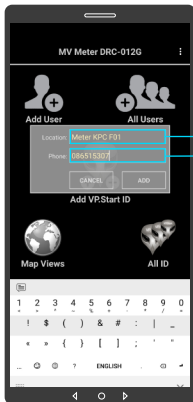


Fig | 37

Click to write location name (DRC-012G name).

Click to write VP.Start ID (DRC-012G phone number).

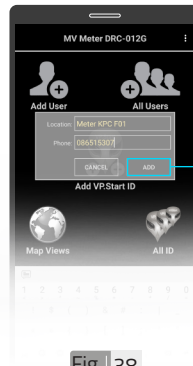


Fig | 38

Click on "ADD" button and confirm by "OK" button.

## 09 Map Views

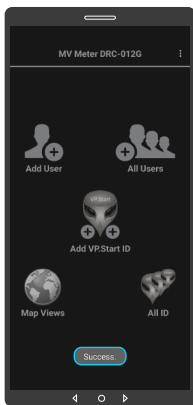


Fig | 39

**NOTE**

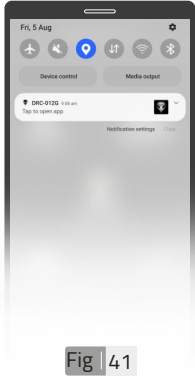
The application will display "Success" as a pop up notification to confirm the registration of the DRC-012G controller into the system.



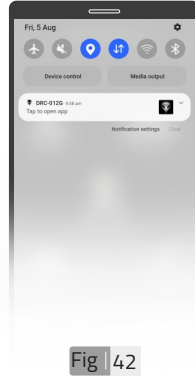
Fig | 40

Scroll down notification bar.

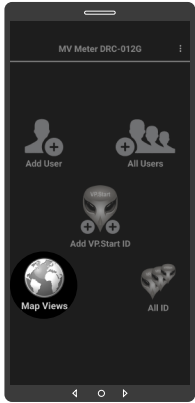




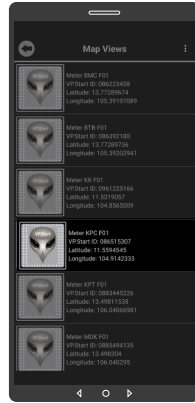
Turn on location.



Turn on Internet.



Click to open "Map Views".



Select a VP.Start ID.

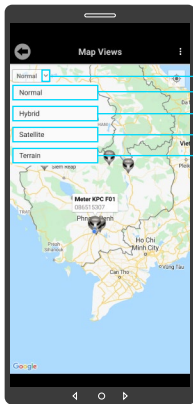


Fig 45

Click here to chose map views.

View Normal map.

View Hybrid map.

View Satellite map.

View Terrain map.

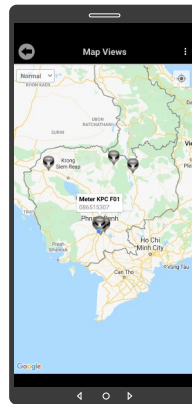


Fig 46

Normal view



Fig 47

Hybrid view

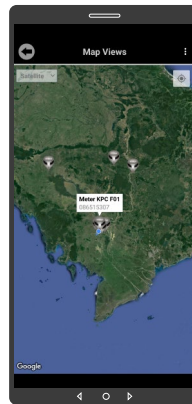


Fig 48

Satellite view



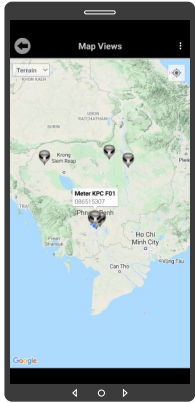


Fig 49

Terrain view

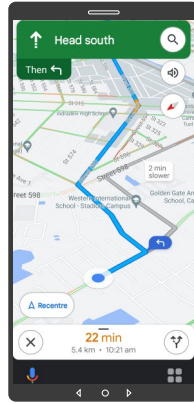


Fig 50

Hold on VP.Start icon to show Drive Mode to VP.Start controller on Google Map.

### Map Views (Change Map Coordinates)

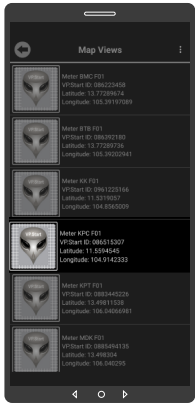


Fig 51

To change map coordinate, hold on VP.Start ID in "Map Views".

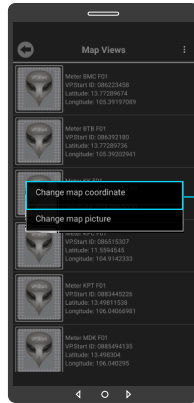
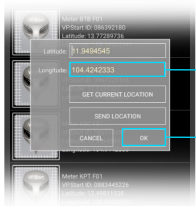


Fig 52

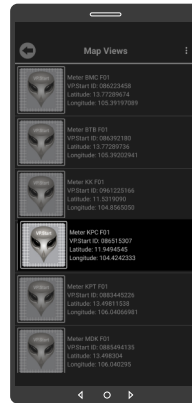
Click on "Change map coordinates".



Click on "GET CURRENT LOCATION".

Click on "OK" button.

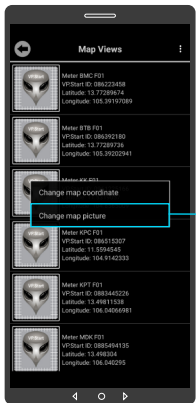
Fig 53



DRC-012G location changed.

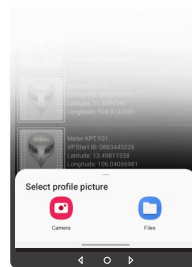
Fig 54

## 11 Map Views (Change Map Picture)



To change map picture, click and hold VP.Start ID in "Map Views" as Fig. 51. And click on "Change map picture"

Fig 55



Take photo from "Camera" or choose photo from "File" and select photo. And confirm by "OK" button.

Fig 56





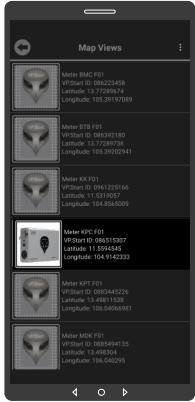


Fig | 57

DRC-012G map picture changed.

## 12 Map Views (Delete Map Picture)

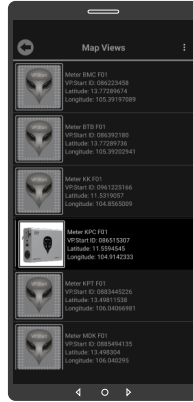


Fig | 58

To Delete Map Picture, hold on map picture.

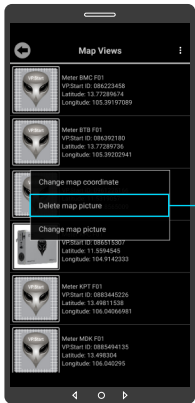


Fig | 59

Click on "Delete map picture" and confirm by "OK" button.

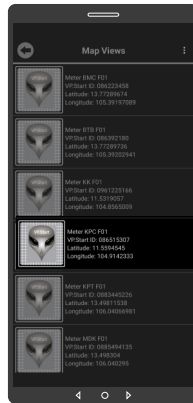


Fig | 60

Map picture deleted.



13 All IDs

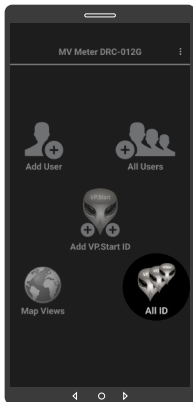


Fig 61

Click on "All ID".



Fig 62

All VP.Start ID view.

**NOTE**  
 Scroll up or down to view more VP.Start ID.

14 Energy Measurement Interface

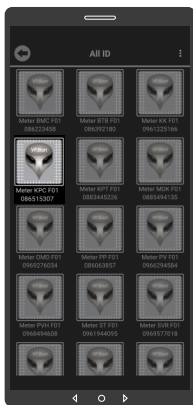


Fig 63

Select a VP.Start ID.

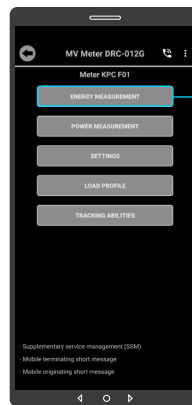


Fig 64

Click on "ENERGY MEASUREMENT".

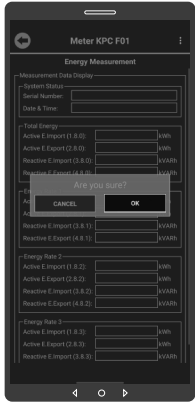


Fig | 65

Click on "OK" button.

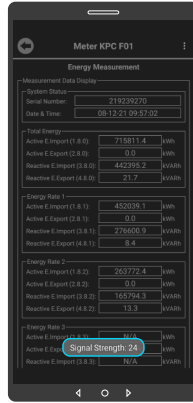


Fig | 66

Energy Measurement interface.

**NOTE**

The "Signal Strength" will pop up as a notification message below indicating signal strength between 1 - 31 at the controller's site location. Signal strength of 15 and above is recommended.

## 15 Power Measurement Interface

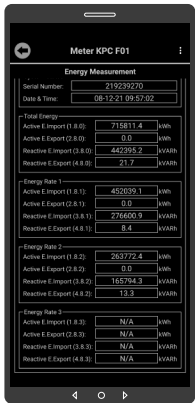


Fig | 67

**NOTE**

Scroll up or down to view more measurement data.

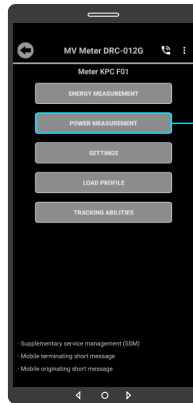


Fig | 68

Click on "POWER MEASUREMENT"



Fig 69

Click on "OK" button.

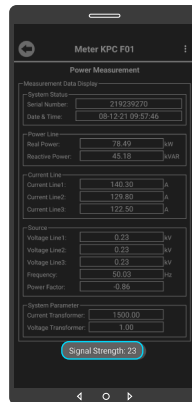


Fig 70

**NOTE**

The "Signal Strength" will pop up as a notification message below indicating signal strength between 1 - 31 at the controller's site location. Signal strength of 15 and above is recommended.

## 16 Settings Interface

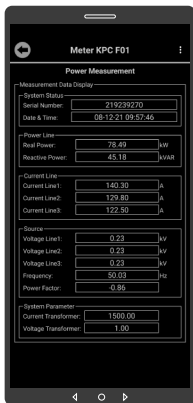


Fig 71

Power Measurement interface.



Fig 72

Click on "SETTINGS".





Fig | 73

Click on "OK" button.

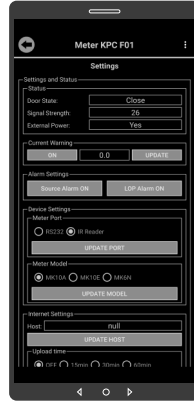


Fig | 74

Setting Interface.

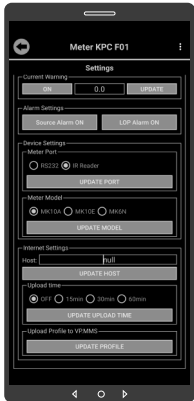


Fig | 75

**NOTE**  
Scroll up or down to view more measurement data.

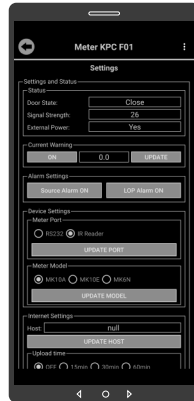


Fig | 76

To Set Current Warning Alarm.



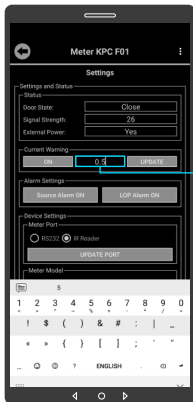


Fig 77

Input Current Warning value. And click on "UPDATE" button.

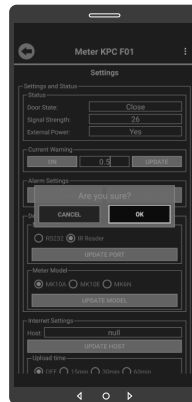


Fig 78

Click on "OK" button.



Fig 79

**NOTE**  
 "Success" will pop up as a notification message below indicating that the controller has been successfully set Current Warning value in the system.

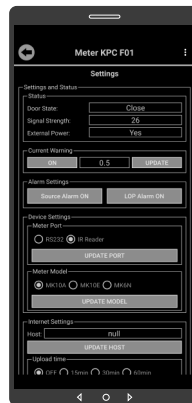


Fig 80

To turn off Current Warning setting, click on "ON" button.

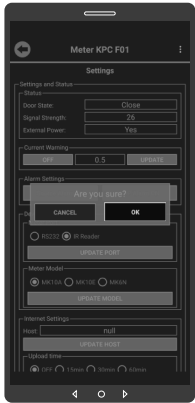


Fig | 81

Click on "OK" button.



Fig | 82

**NOTE**  
 "Success" will pop up as a notification message below indicating that the controller has been successfully turn off Current Warning Setting in the system.



Fig | 83

Current Warning Off.

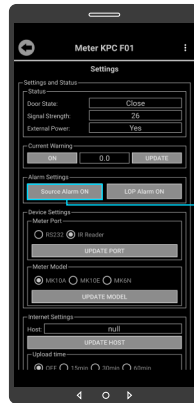


Fig | 84

To turn off Source Alarm, click on "Source Alarm ON".





Fig 85

Click on "OK" button.



Fig 86

**NOTE**  
 "Success" will pop up as a notification message below indicating that the controller has been successfully turn off Source Alarm in the system.

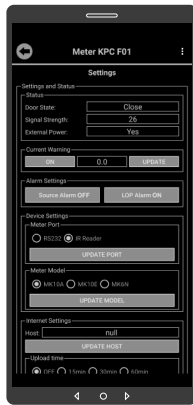


Fig 87

Source Alarm Off.

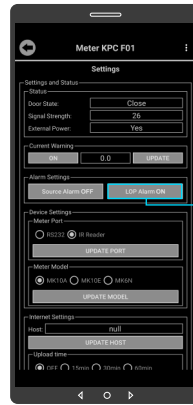


Fig 88

To turn off Lost of Phase (LOP) Alarm, click on "LOP Alarm ON".





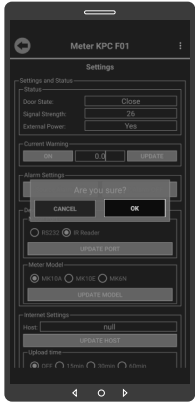


Fig | 89

Click on "OK" button.



Fig | 90

**NOTE**  
 "Success" will pop up as a notification message below indicating that the controller has been successfully turn off Lost of Phase (LOP) Alarm in the system.

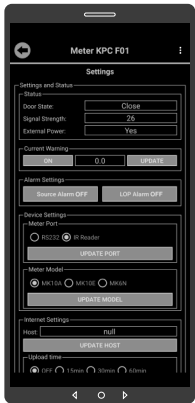


Fig | 91

Lost of Phase (LOP) Alarm Off.

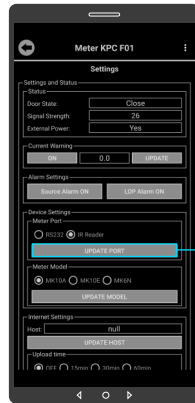


Fig | 92

To set Meter Port, chose RS232 or IR Reader port.





Fig 93

Click on "OK" button.



Fig 94

**NOTE**

“Success” will pop up as a notification message below indicating that the controller has been successfully set Meter Port in the system.



Fig 95

Meter Port Set.



Fig 96

To set Meter Model, chose MK10A, MK10E or MK6N.

Click on "UPDATE MODEL" button.



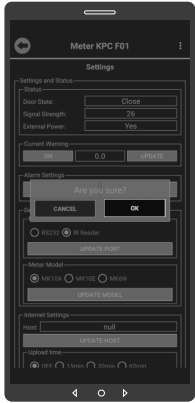


Fig | 97

Click on "OK" button.

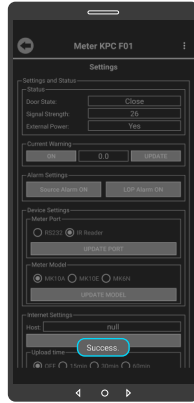


Fig | 98

**NOTE**

“Success” will pop up as a notification message below indicating that the controller has been successfully set Meter Model in the system.

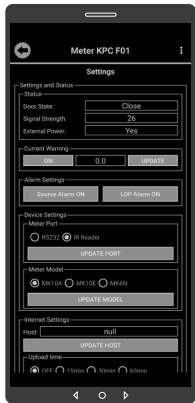


Fig | 99

Meter Model set.

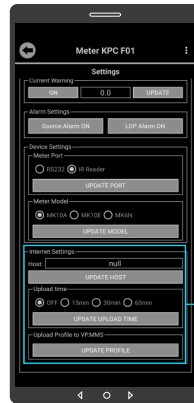


Fig | 100

Internet Setting is optional for DRS Software.



## 17 Load Profile

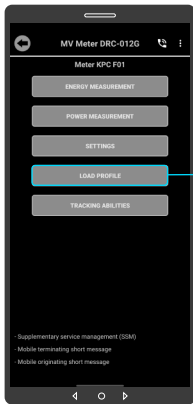


Fig | 101

To read Load Profile of MV Meter, click on "LOAD PROFILE".



Fig | 102

Click to show calendar.

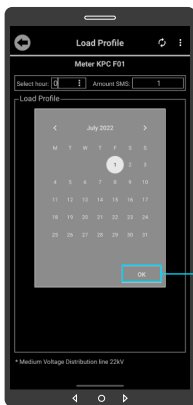


Fig | 103

Select date to read Load Profile, then click on "OK" button.

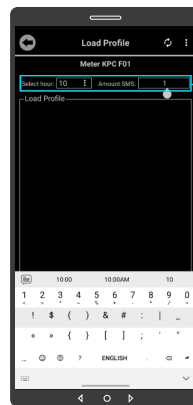


Fig | 104

Select hour and Amount SMS to show.

Then click on "Refresh" sign.



Fig 105

Click on "OK" button.

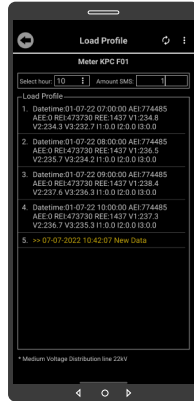


Fig 106

Load Profile read.



Fig 107

To delete Load Profile Data, hold on Load Profile data.

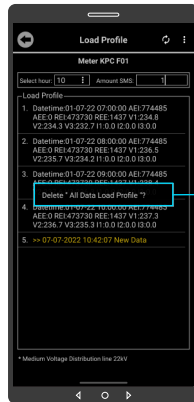


Fig 108

Click on Delete "All Data Load Profile"?





Fig | 109

Load Profile Data deleted.

## 18 Tracking Abilities Interface

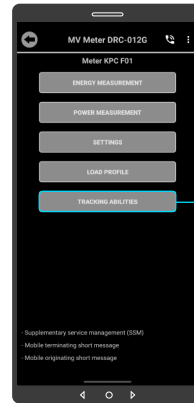


Fig | 110

Click on "TRACKING ABILITIES".

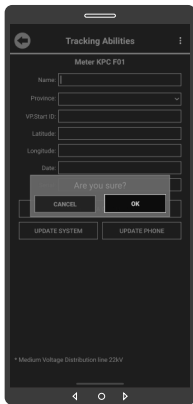


Fig | 111

Click on "OK" button to read DRC-012G controller Tracking Abilities.

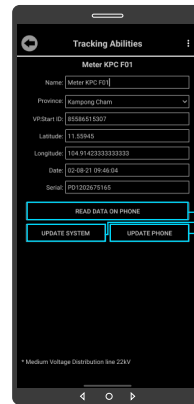


Fig | 112

Click to read data on phone.

Click to update data from phone to system.

Click to update date to phone.



## 19 Renaming VP.Start IDs (DRC-012G Controllers)

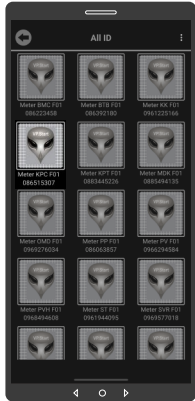


Fig 113

To rename VP.Strat ID, hold on VP.Start ID icon.

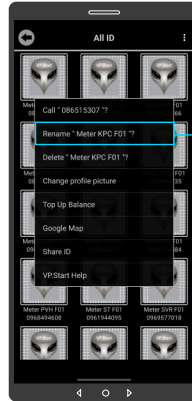


Fig 114

Click on "Rename".



Fig 115

Rename existing name. And click on "OK" button.

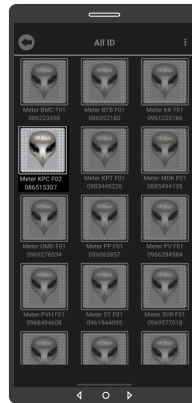


Fig 116

Controller's name changed.

## 20 Delete VP.Start ID

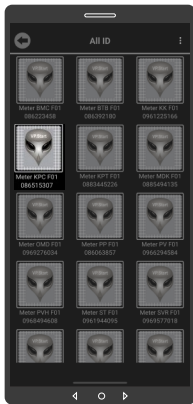


Fig 117

To delete VP.Start ID, hold on VP.Start ID icon.

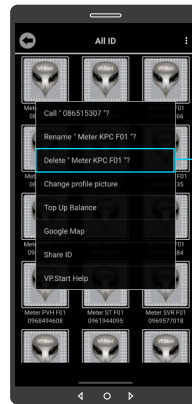


Fig 118

Click on "Delete". Then click on "OK" button.

## 21 Clear Alarm

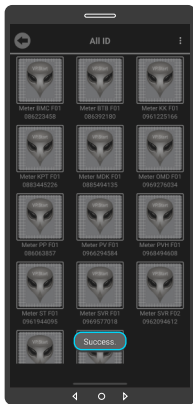


Fig 119

**NOTE**

"Success" will pop up as a notification message below indicating that the controller has been successfully deleted from the system.



Fig 120

To Clear Alarm, hold on alarmed VP.Start ID.







Fig 121

Click on "Clear Alarm".  
Click on "Back" sign.

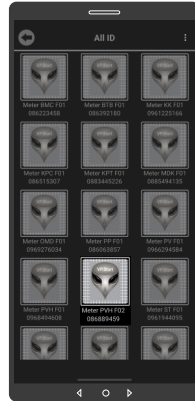


Fig 122

Alarm VP.Start ID cleared.

## 22 Change Profile Picture

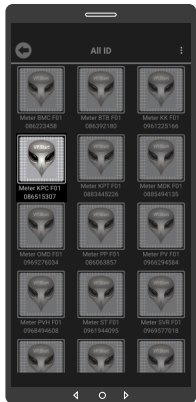


Fig 123

To change profile picture, hold on VP.Start ID icon.

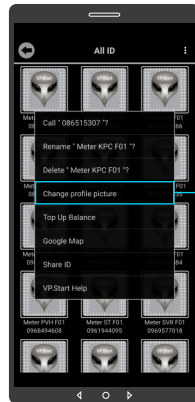


Fig 124

Click on "Change profile picture".

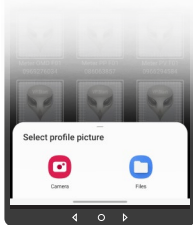


Fig | 125

Take photo from “Camera” or choose photo from “File” and select photo. And confirm by “OK” button.

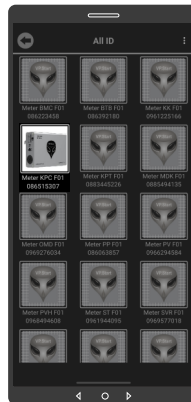


Fig | 126

Profile picture changed.

## 23 Delete Profile Picture

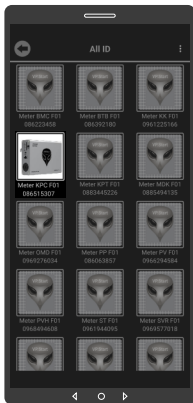


Fig | 127

To delete profile picture, hold on VPStart ID icon.

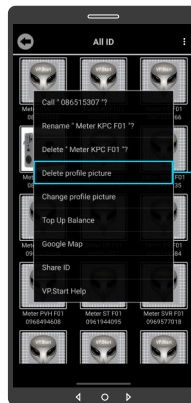


Fig | 128

Click on “Delete profile picture”. And confirm by “OK” button.



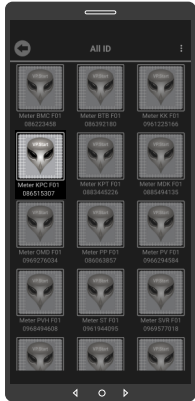


Fig 129

Controller profile picture deleted.

**24** Top Up / Check Balance

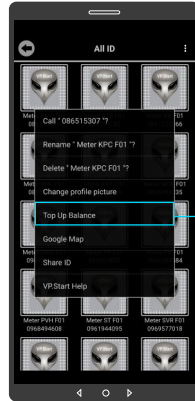


Fig 130

To top up or check balance, hold on VP.Start ID icon and click on "Balance".

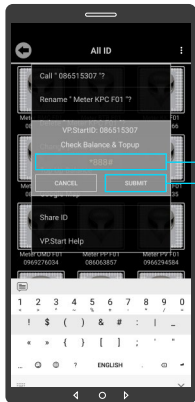


Fig 131

Input the check or top up balance command.  
Click on "SUBMIT" to send the "Check or top up balance" command to the controller.

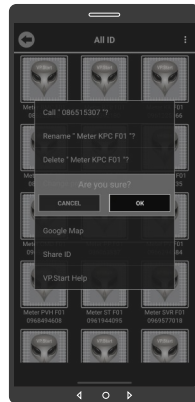


Fig 132

Confirm by "OK" button.

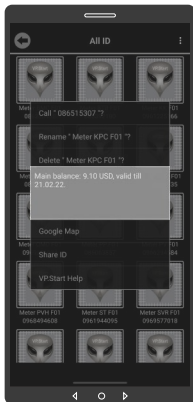


Fig | 133

Balance interface showed.

**25** Google Map



Fig | 134

To view Google Map with Drive Mode to VP.Start controller, click on "Google Map".

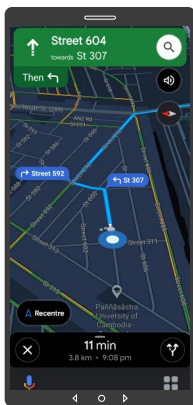


Fig | 135

Google Map Drive Mode showed.

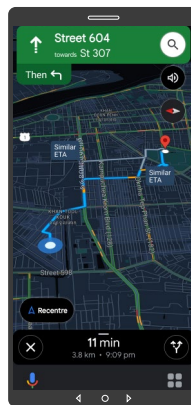


Fig | 136

Click on "X" sign to view in Google Map view.



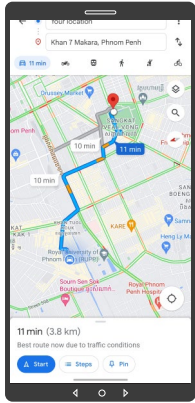


Fig 137

Google Map viewed.

## 26 Share ID

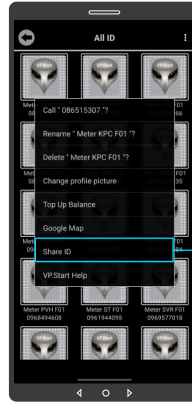


Fig 138

To share VP.Start ID to other phone number, hold on VP.Start ID icon and click on "Share ID".

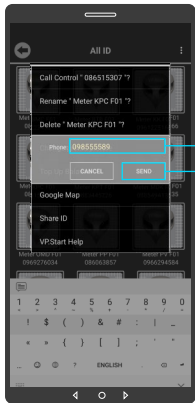


Fig 139

Click to write phone number to share.

Click on "SEND" button.

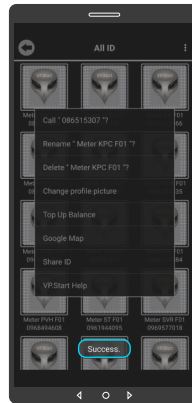


Fig 140

**NOTE**  
 "Success" will pop up as a notification message below indicating that you have successfully shared the DRC-012G controller's ID and controller information to another phone number as a SMS as shown in Fig. 140.





Fig 141

**NOTE**  
 Controller ID and information displayed as an SMS with a shared number.

27 VP.Start Help

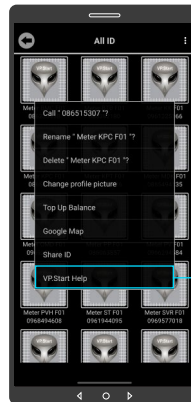


Fig 142

To alert to call center immediately for help, click and hold on VP.Start ID icon and click on "VP.Start Help".

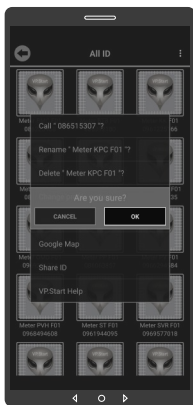


Fig 143

Click on "OK" button. The app will command the DRC-012G controller to automatically share its ID information and call directly to VP.Start's call center to alert our support team immediately.

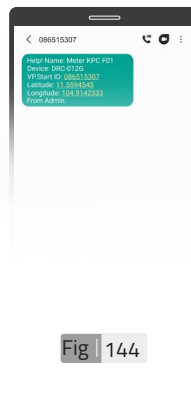


Fig 144

**NOTE**  
 As shown in Fig. 144, the DRC-012G controller will share its ID to VP.Start's call center



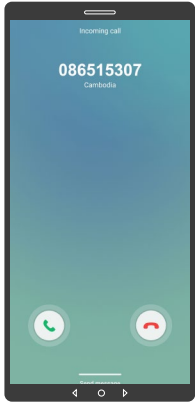


Fig | 145

**NOTE**

As shown in Fig. 145, the DRC-012G controller is calling VP.Start's call center to immediately alert the support team.

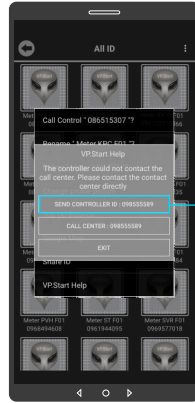


Fig | 146

If the controller is inaccessible for any reason, the app can be used to manually send the controller ID to the VP.Start call center. Click on "SEND CONTROLLER ID: 09855589" to execute the Command. And confirm by "OK" button.

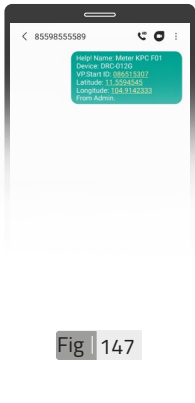


Fig | 147

**NOTE**

The user has shared the controller's ID manually with VP. Start's call center as shown in Fig. 147.

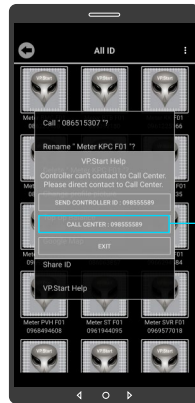


Fig | 148

Or Click on "CALL CENTER: 098 555 589" to call to VP. Start's call center.

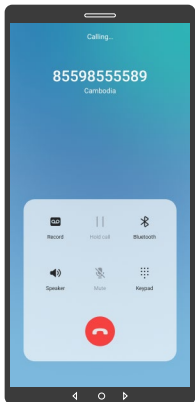


Fig | 149

**NOTE**  
 User has manually executed the command to call VP Start's call center.

**28 Alarm System**

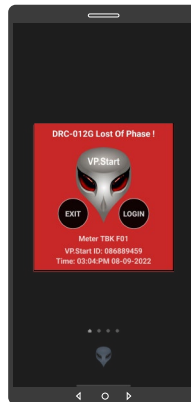


Fig | 150

Lost of Phase Alarm.

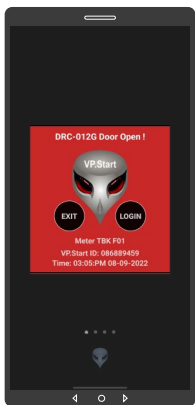


Fig | 151

Door Open Alarm.

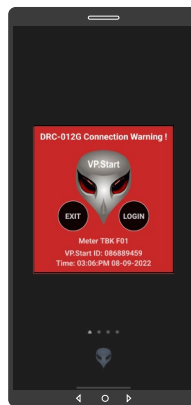


Fig | 152

Maintenance MV Meter Alarm.



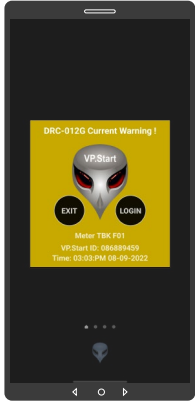


Fig | 153

Current Warning Alarm.

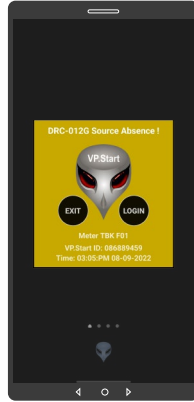


Fig | 154

22kV Supply Off Alarm.

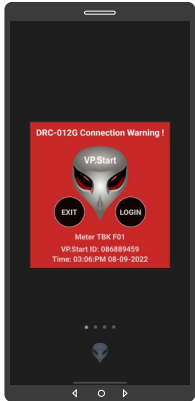


Fig | 155

**NOTE**  
An alarm notification message will appear whenever the system detects a problem such as Lost of Phase, Door Open, Maintenance MV Meter, Current Warning and 22kV Supply Off.

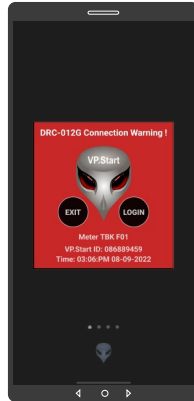
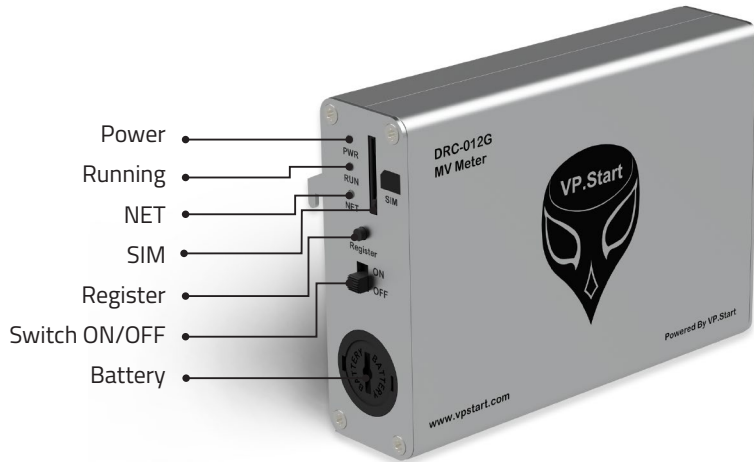


Fig | 156

**NOTE**  
Click on "LOGIN" to login controls interface panel.  
Click on "EXIT" to exit an alarm notification message.

# TROUBLESHOOTING



## LED Light Status Explanation

LED Light	LED Status	System Working Status
Power	Off	The Power button is not turned On. No power input.
	Red	Power On
Running	Red (blinking every 1s)	Running normally
Net	64ms On/800ms Off	GSM has not registered to a network
	64ms On/3000ms Off	GSM has registered to a network
	64ms On/300ms Off	GPRS communication
	Off	GSM is not running



# CONTACT US



## VP.Start



### VP.Start HQ

#15, Street 604, Sangkat Boeung Kok 2, Khan Toul Kork, Phnom Penh, 120408, Cambodia.



### VP.Start Sen Sok Valley Campus

#29, Street 1946, Sangkat Phnom Penh Thmey, Khan Sen Sok, Phnom Penh, 120408, Cambodia.



(+855) 23 888 167 / 86 666 677 / 98 555 589



sale@vpstart.com / info@vpstart.com



www.vpstart.com



